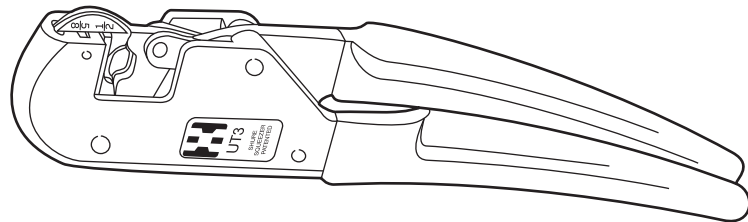


## OPERATING INSTRUCTIONS

# Installing tool, UT 3

For all 1/2" and 5/8" compression connectors

**WARNING:**

- Risk of shock, disconnect power before installation.

**CAUTION:**

- Product should be operated by a qualified electrician in accordance with national and local electrical codes.

**Important**

Read and understand all instructions and safety information in this manual before operating or servicing this tool. Be aware of proper usage and potential hazards.

This lightweight (35 ounces) pocket size tool features SHURE-SQUEEZER™ DESIGN - a proven ratchet and pawl mechanism which is designed to deliver proper compression before the jaws will release.

It installs the complete range of 1/2" and 5/8" self-insulated and bare SHURE-SPLICER™ service connectors, in addition to one and two hole lugs, pin terminals, tees, splices and the UB212 and UB214 street lighting tap, simply by removing and reversing the coded upper die in the tool head.

Installation time is quicker because one stroke of the tool develops a full circumferential compression.

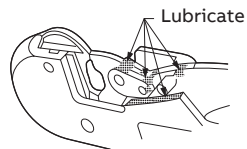
The tool frame is precision cast of steel with plastisol cushioned handles.

Because the tool has relatively few moving parts, maintenance consists of an occasional oiling of pivot and link pin areas.

## Instructions

### Lubrication:

The tool should be oiled occasionally with a good grade of lubricating oil in the pivot and link pin areas.



### Installing dies:

This tool installs all  $\frac{1}{2}$ " and  $\frac{5}{8}$ " compression connectors. Install both sizes quickly by removing and reversing the upper die for either size. To install the  $\frac{1}{2}$ " sizes, the die should be in the position shown in Figure B ( $\frac{1}{2}$ " is readable, the  $\frac{5}{8}$ " is upside down). To install  $\frac{5}{8}$ " sizes, pull the upper die straight out of the tool, reverse the die and re-insert into tool. The  $\frac{5}{8}$ " is now readable as shown in Figure C.

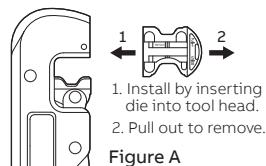


Figure A

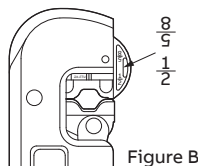


Figure B

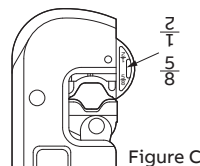


Figure C

### Tool compression test:

To test for proper compression, place the "tolerance gauge" between the dies and close the tool. If the gauge is not held in place, the tool is below tolerance and should be returned to the factory for repair, Figure D.

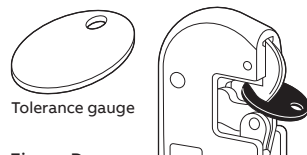


Figure D

For parts or service, contact Tool Service Center at:  
Phone: 1-800-284-TOOL (8665)  
Webpage: [electrification.us.abb.com/tool-service](http://electrification.us.abb.com/tool-service)

tnb.abb.com (US/Latin America)  
tnb.ca.abb.com (Canada)  
abb.com  
Warranty: [tnb.abb.com/toolregistration](http://tnb.abb.com/toolregistration)

We reserve the right to make technical changes or modify the contents of this document without prior notice. With regard to purchase orders, the agreed particulars shall prevail. ABB does not accept any responsibility whatsoever for potential errors or possible lack of information in this document.

## Part list

Overall dimensions: 12" x 2  $\frac{1}{2}$ " x  $\frac{3}{4}$ "  
Weight: 2 lbs. 3 oz.

### Product selection

Part no:	Index No.	Description
UT 3-1	1	Frame
UT 3-12	2	Nest spring
UT 3-4G	3	Nest
UT 3-10	4	Indentor pivot pin
UT 3-3	5	Indentor
UT 3-5	6	Link
UT 3-11	7	Link pin
UT 3-9	8	Handle pivot pin
UT 3-2	9	Movable handle
UT 3-14	10	Groove pin
UT 3-8	11	Washer
UT 3-13	12	Pawl pin
UT 3-6	13	Pawl
UT 3-7	14	Extension spring

Note: Product must be operated in accordance with applicable national and local electrical codes.

We reserve all rights in this document and in the subject matter and illustrations contained therein. Any reproduction – in whole or in part – is forbidden without prior written consent of ABB. © 2022 ABB Installation Products Inc. and/or its related companies. All Rights Reserved.

