

INSTALLATION INSTRUCTIONS

Flood Seal® Mechanical Connector

SHC 3 MRS - SHC 8 MRS



CAUTION: Product should be installed by a qualified electrician in accordance with national and local electrical codes.

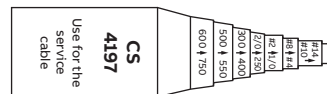
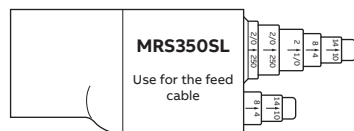


WARNING: Risk of shock, disconnect power before installation.

Instructions:

- Identify the cable size being used.
 - For the feed cable, use the MRS350SL.
 - For the service cable, use the CS4197.

Cut rocket/cap ring at tip of arrow to leave the correct wire range showing.



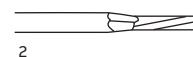
tnb.abb.com (US/Latin America)
 tnb.ca.abb.com (Canada)
 abb.com
 Warranty:
 tnb.abb.com/ecpwarranty

We reserve the right to make technical changes or modify the contents of this document without prior notice. With regard to purchase orders, the agreed particulars shall prevail. ABB does not accept any responsibility whatsoever for potential errors or possible lack of information in this document.

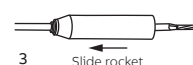
**Important**

Read and understand all instructions and safety information before use. Be aware of proper usage and potential hazards.

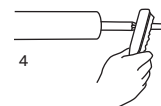
- Strip insulation from the cable, baring approximately 2 3/4" of conductor. Penciling the edge of the insulation is recommended, but not required.
- Wipe cable clean. Apply silicone grease (to cable) and slide cut rocket over the prepared cable.
- Wire brush the bare conductor thoroughly to break up surface oxides. Add compound and brush into strands.
- Insert conductor into the outlet, leaving a maximum of 1/8" of bare conductor showing.
- Tighten the set screws down on the conductor to the specified torque. The use of a torque wrench is recommended. If not available, use a 5/16" allen wrench or a 3/8" drive ratchet with an allen adapter. The use of a "T" handle wrench or 1/2" drive is not recommended.
 - WIRE SIZE:** #12 to #2 and 1/0 to 350 Kcm
 - TORQUE:** 120 in-lbs. (10 ft-lbs) and 360 in-lbs (30 ft-lbs)
- Slide rocket sleeve over the outlet and on to the PVC shoulder until the rocket butts against the connector bar.



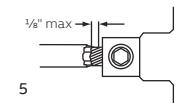
2



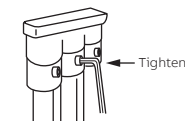
3



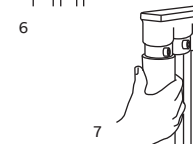
4



5



6



7

We reserve all rights in this document and in the subject matter and illustrations contained therein. Any reproduction – in whole or in part – is forbidden without prior written consent of ABB.
 Copyright© 2019 ABB. All rights reserved.