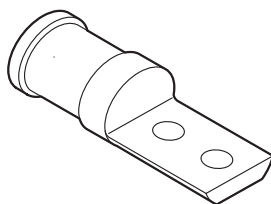


Color-Keyed®

COPPER TRACTION MOTOR-DISCONNECT LUGS

GENERAL INFORMATION

- Made of high conductivity copper, electro-tin plated.



! WARNING !
**DO NOT CRIMP ON HOT
ENERGIZED WIRES.**

INSTALLATION INSTRUCTIONS

1. Strip the insulation from cable to the length shown in table on reverse side. Be careful not to nick cable strands which may later result in strands breaking.
2. Cable end should be clean: wire brushed then inserted into the connector until it stops. Inspect cable through peep hole to confirm cable is fully inserted.
3. Table on reverse side shows installing die code. Insert connector in die and compress in center of recess on barrel.

! CAUTION !
Using improper installing die may result in a defective connection.

4. After crimping, remove all sharp edges, flash or burrs.

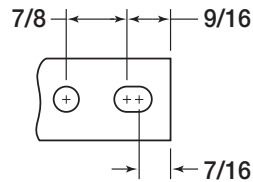
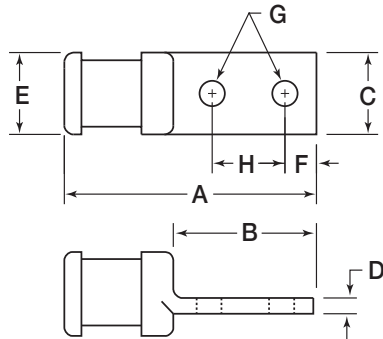
Thomas & Betts

WARRANTY: Thomas & Betts sells this product with the understanding that the user will perform all necessary tests to determine the suitability of this product for the user's intended application. Thomas & Betts warrants that this product will be free from defects in materials and workmanship for a period of two (2) years following the date of purchase. Upon prompt notification of any warranted defect, Thomas & Betts will, at its option, repair or replace the defective product or refund the purchase price. Proof of purchase is required. Misuse or unauthorized modification of the product voids all warranties.

Limitations and Exclusions: **THE ABOVE WARRANTY IS THE SOLE WARRANTY CONCERNING THIS PRODUCT, AND IS IN LIEU OF ALL OTHER WARRANTIES EXPRESS OR IMPLIED, INCLUDING BUT NOT LIMITED TO ANY IMPLIED WARRANTY OF MERCHANTABILITY OR FITNESS FOR A PARTICULAR PURPOSE, WHICH ARE SPECIFICALLY DISCLAIMED. LIABILITY FOR BREACH OF THE ABOVE WARRANTY IS LIMITED TO COST OF REPAIR OR REPLACEMENT OF THE PRODUCT, AND UNDER NO CIRCUMSTANCES WILL THOMAS & BETTS BE LIABLE FOR ANY INDIRECT, SPECIAL, INCIDENTAL OR CONSEQUENTIAL DAMAGES.**

Thomas & Betts Corporation
Memphis, Tennessee
In Canada, Thomas & Betts Ltd., Iberville, P.Q.
Website: www.tnb.com

Cat. No.	Cable Size (Copper Only)	Dimensions (inches)				E	Bolt Size (Inches)			Die Code	Strip Length
		A	B	C	D	Approx. (inches)	F	G	H		
MD225	225/24	3	1-7/8	11/16	13/64	23/32	7/16	5/16	7/8	60	7/8
MD275	275/24	3	1-7/8	11/16	13/64	23/32	7/16	5/16	7/8	60	7/8
MD325	325/24	3	1-7/8	11/16	13/64	23/32	7/16	5/16	7/8	60	7/8
MD375	375/24	3-1/8	2	25/32	13/64	23/32	7/16	5/16	7/8	60	7/8
MD450	450/24	3-1/8	2	25/32	13/64	23/32	7/16	5/16	7/8	60	7/8
MD550	550/24	3-3/16	1-7/8	15/16	13/64	1	7/16	5/16	7/8	76	1-1/16
MD650	650/24	3-3/16	1-7/8	15/16	13/64	1	7/16	5/16	7/8	76	1-1/16
MD775	775/24	3-3/16	1-7/8	15/16	13/64	1	7/16	5/16	7/8	76	1-1/16
MD925	925/24	3-3/4	2-1/16	1-1/8	3/8	1-5/32	7/16	3/8	1	87	1-5/16
MD1100	1100/24	3-3/4	2-1/16	1-11/32	3/8	1-3/8	7/16	3/8	1	107	1-7/16
MD1325	1325/24	3-25/32	2-3/32	1-5/32	3/8	1-3/4	7/16	3/8	1	107	1-7/16
MD1600	1600/24	3-3/4	2-1/16	1-11/32	3/8	1-3/8	7/16	3/8	1	107	1-7/16
MD1925	1925/24	4-1/16	2-3/32	1-11/32	3/8	1-1/2	7/16	3/8	1	115	1-9/16
MD2300	2300/24	4-3/8	2-1/8	1-19/32	3/8	1-21/32	7/16	3/8	1	130	1-13/16



± Cat. No. MD1925 Supplied
with Elongated Bolt Holes.

APPLICATION TOOLS: TBM14, TBM15 or 21940

Thomas & Betts