

Catalog Number:

SBOADJ.....Adjustable 12" - 25" stud to stud bracket.

READ ALL INSTRUCTIONS AND WARNINGS CAREFULLY BEFORE PROCEEDING!



WARNING



DISCONNECT THE ELECTRICAL CIRCUIT SUPPLYING POWER TO THE OUTLET PRIOR TO INSTALLATION.



CAUTION



TO PREVENT INJURY, THE BRACKET MUST BE SECURELY INSTALLED IN ACCORDANCE WITH THESE INSTRUCTIONS BEFORE MOUNTING THE OUTLET BOXES.

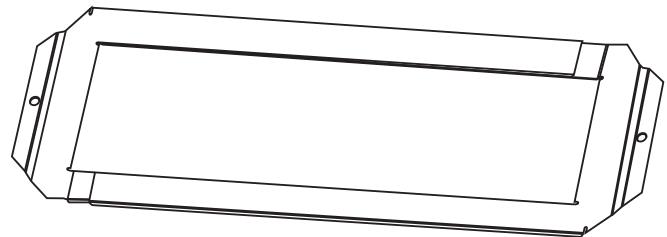
AFTER INSTALLATION OF BRACKET, BE SURE TO FOLLOW ALL MOUNTING INSTRUCTIONS WITH THE OUTLET BOXES.

— CONSULT A QUALIFIED ELECTRICIAN IF YOU HAVE ANY QUESTIONS. —

O Justable Bracket

Features for SBOADJ

1. Adjustable from 12" to 25" stud spacing.
NOTES: Bracket assembly (a set of two brackets) is used for 14" to 25" stud spacing, single bracket is used for 12" to 14" stud spacing.
2. For mounting single or multiple 4", 4-11/16" or 5" boxes/plaster rings. (See Figure 1)
3. Can be mounted at any height to meet individual project requirements.
4. Versatile, open design enables mounting of box in any location across horizontal plane between stud.
5. Device cover (mud ring) mounts to front of bracket to secure box in desired location.



Bracket Assembly

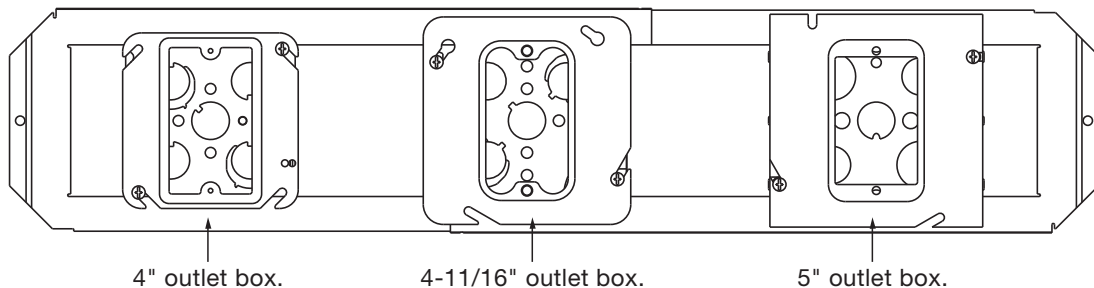
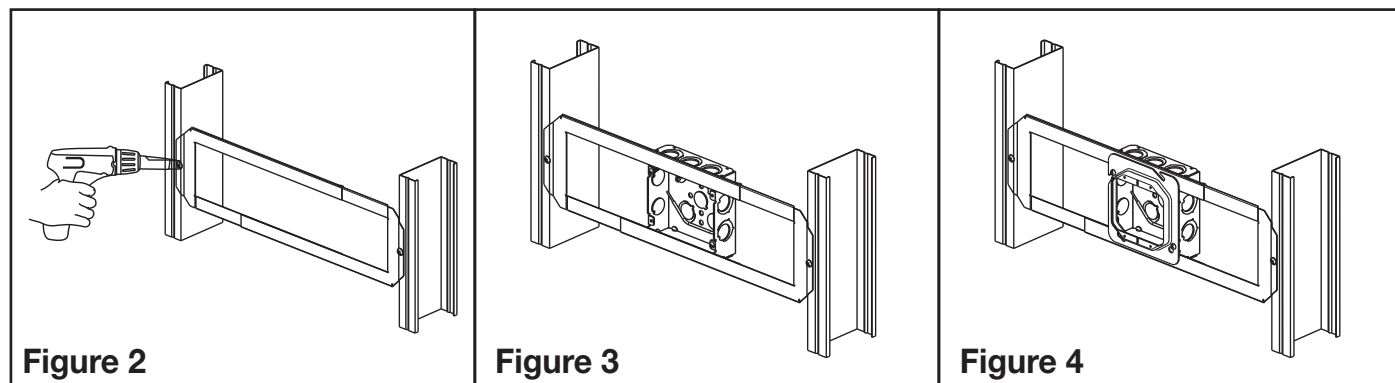


Figure 1

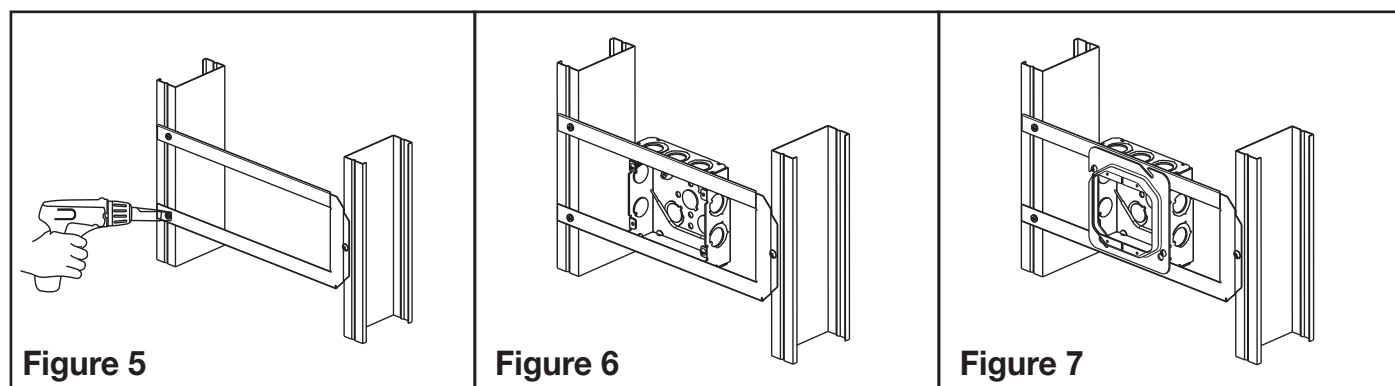
INSTALLATION INSTRUCTIONS

- 1) Adjust bracket to appropriate stud spacing and attach bracket to metal stud with self-tapping screws or screw gun (See Figure 2/Figure 5)
- 2) Place outlet box on back side of the bracket with the cover mounting screws in the bracket opening. (See Figure 3/Figure 6)
- 3) Secure drywall ring to the box on the drywall side portion of bracket (See Figure 4/Figure 7)
- 4) At 12" stud spacing - SBOADJ accepts two 4" boxes or one 4-11/16" box or one 5" box (deep or shallow)
At 16" stud spacing - SBOADJ accepts three 4" boxes or two 4-11/16" boxes or two 5" boxes (deep or shallow)
At 24" stud spacing - SBOADJ accepts five 4" boxes or four 4-11/16" boxes or four 5" boxes (deep or shallow)

1. Two Brackets Installation (From 14" to 25" stud spacing)



2. Single Bracket Installation (From 12" to 14" stud spacing)



WARRANTY: Thomas & Betts sells this product with the understanding that the user will perform all necessary tests to determine the suitability of this product for the user's intended application. Thomas & Betts warrants that this product will be free from defects in materials or workmanship for a period of two (2) years following the date of purchase. Upon prompt notification of any warranted defect, Thomas & Betts will, at its option, repair or replace the defective product. Misuse, misapplication or modification of Thomas & Betts Products immediately voids all warranties.

Limitations and Exclusions: THE ABOVE WARRANTY IS THE SOLE WARRANTY CONCERNING THIS PRODUCT, AND IS IN LIEU OF ALL OTHER WARRANTIES EXPRESS OR IMPLIED, INCLUDING BUT NOT LIMITED TO ANY IMPLIED WARRANTY OF MERCHANTABILITY OR FITNESS FOR A PARTICULAR PURPOSE, WHICH ARE SPECIFICALLY DISCLAIMED. LIABILITY FOR BREACH OF THE ABOVE WARRANTY IS LIMITED TO COST OF REPAIR OR REPLACEMENT OF THE PRODUCT, AND UNDER NO CIRCUMSTANCES WILL THOMAS & BETTS BE LIABLE FOR ANY INDIRECT, SPECIAL, INCIDENTAL OR CONSEQUENTIAL DAMAGES.