

COMFORT CRIMP® Compression tool with SHURE STAKE® mechanism

FER9502 Trapezoid Crimp, for installing ferrules 26-8 AWG & 0.14-10mm²

Sta-Kon®



Important

Read and understand all instructions and safety information before use. Be aware of proper usage and potential hazards.

Warnings and Cautions:



Caution: Product should be utilized by a qualified electrician in accordance with national and local electrical codes.



Warning: Risk of shock, disconnect power before installation.



Caution: Wear safety glasses.



Warning: Pinch points, keep hands away from the stripping and cutting jaws. Failure to observe this warning could result in severe injury or death.

Instructions for use:

Ferrule and crimp installation

1. Open handles fully. To unlock SHURE STAKE® mechanism, close handles tightly. Release to open handle (Figure 1).

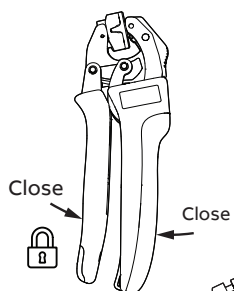


Figure 1

2. Insert stripped wire into ferrule. (Figure 2).

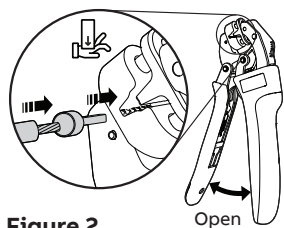


Figure 2

3. Position ferrule into the tool jaw (Figure 3)

4. Close handles until the SHURE STAKE® mechanism cycle has been completed (Figure 3).

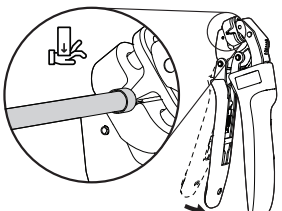


Figure 3

Close handles.

5. Open tool and remove crimped ferrule and wire (Figure 4).

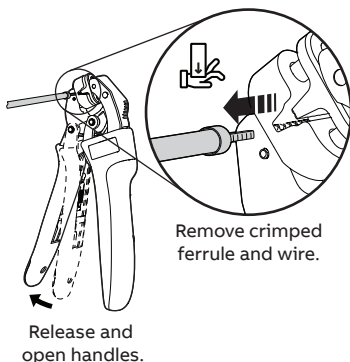


Figure 4

Emergency release of the SHURE STAKE® mechanism:

1. To release the SHURE STAKE® mechanism, push up on the release lever until the ratchet teeth are disengaged (Figure 5).

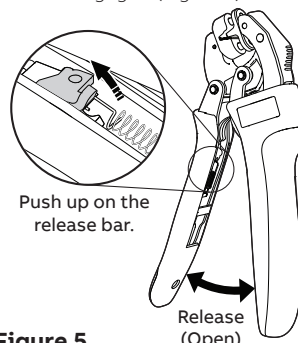


Figure 5

Rotating die nest:

1. Push button down and rotate die nest, for easier installation of ferrules (Figure 6).

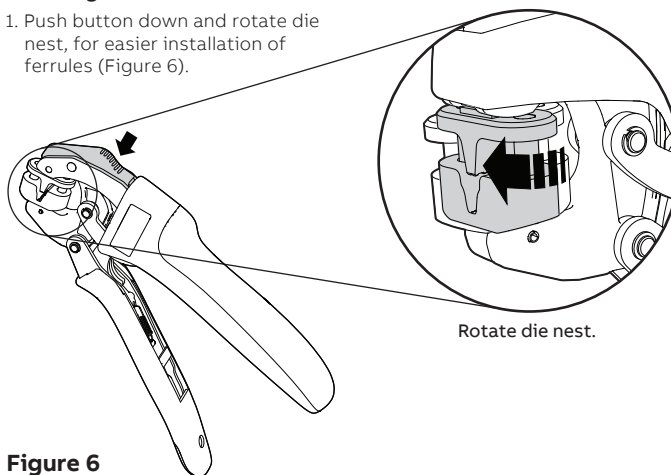


Figure 6

Maintenance:

1. Remove dust, moisture, and other contaminants with a clean brush or a soft, lint-free cloth.
2. DO NOT use on objects that could damage the tool.
3. Make certain all pins, pivot points, and bearing surfaces are protected with a THIN coat of any good SAE No. 20 motor oil. DO NOT oil excessively (Figure 7).
4. Keep handles closed when not in use to prevent objects from becoming lodged in the crimping dies.
5. Store tool in a cool, dry area.

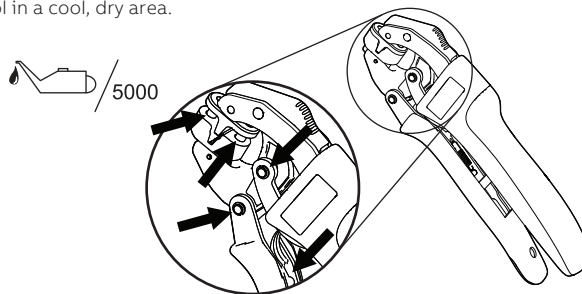


Figure 7

Warnings and Cautions:



Caution: Product should be utilized by a qualified electrician in accordance with national and local electrical codes.



Warning: Risk of shock, disconnect power before installation.



Caution: Wear safety glasses.



Warning: Pinch points, keep hands away from the stripping and cutting jaws. Failure to observe this warning could result in severe injury or death.

