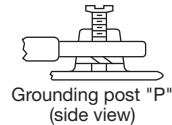
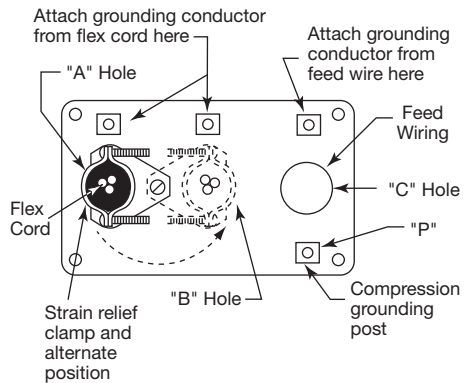


## INSTALLATION INSTRUCTIONS FOR SB14 & SB100 SWIMMING POOL JUNCTION BOX

### IMPORTANT:

To achieve watertight installation, follow the applicable 2014 National Electrical Code provisions, including Article 680.23 (b)(4) which states "The end of the flexible-cord jacket and the flexible-cord conductor terminations within a luminaire shall be covered with or encapsulated in a suitable potting compound to prevent the entry of water into the luminaire through the cord or its conductors", Article 680.24(a)(2)(1) which states "An approved potting compound is used to fill the box to prevent the entrance of moisture."

1. See table for conduit hole selection.
2. Close unused hole with proper plug. Use sealer on threads and tighten.
3. Mount junction box to conduit and remove cover.
4. Run the flexible cord and feed wiring through the conduit from the pool light to the junction box.
5. Secure flexible cord with strain relief clamp.
6. Tighten strain relief clamp to junction box base.
7. Attach ground conductors from flexible cord and feed wires to terminal screws on the grounding posts.
8. Connect other wires appropriately and securely assemble cover to base with four (4) cover screws and gasket.



**NOTE:** If non-metal conduit is used between this box and the forming shell of the swimming pool fixture, route a separate No. 8 AWG insulated solid copper bond wire through the same conduit as the flexible cord and through the strain relief clamp. Connect the bond wire to the compression grounding post through the hole provided and tightly fasten the screw.

**NOTE:**  
TYPE SQ, ST, or STD FLEXIBLE CORD SHOULD BE USED.

<b>WARRANTY:</b> Thomas & Betts sells this product with the understanding that the user will perform all necessary tests to determine the suitability of this product for the user's intended application. Thomas & Betts warrants that this product will be free from defects in materials or workmanship for a period of two (2) years following the date of purchase. Upon prompt notification of any warranted defect, Thomas & Betts will, at its option, repair or replace the defective product. Misuse, misapplication or modification of Thomas & Betts Products immediately voids all warranties.	
<b>Limitations and Exclusions:</b> THE ABOVE WARRANTY IS THE SOLE WARRANTY CONCERNING THIS PRODUCT, AND IS IN LIEU OF ALL OTHER WARRANTIES EXPRESS OR IMPLIED, INCLUDING BUT NOT LIMITED TO ANY IMPLIED WARRANTY OF MERCHANTABILITY OR FITNESS FOR A PARTICULAR PURPOSE, WHICH ARE SPECIFICALLY DISCLAIMED. LIABILITY FOR BREACH OF THE ABOVE WARRANTY IS LIMITED TO COST OF REPAIR OR REPLACEMENT OF THE PRODUCT, AND UNDER NO CIRCUMSTANCES WILL THOMAS & BETTS BE LIABLE FOR ANY INDIRECT, SPECIAL, INCIDENTAL OR CONSEQUENTIAL DAMAGES.	

WIRE DATA			
CAT. NO.	SIZE		
	HOLE "A"	HOLE "B"	HOLE "C"
SB14	3/4" NPT	3/4" NPT	3/4" NPT
SB100	3/4" NPT	1" NPT	3/4" NPT
<b>APPLICATION</b>	FLEXIBLE CORD TO POOL LIGHT USE STRAIN RELIEF CLAMP		FEED WIRE TO JUNCTION BOX
<b>WIRE SIZE</b>	10/3 or 16/3		