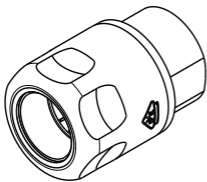


INSTRUCTION SHEET


ABB Food and Bev Cable Glands

Series: FSCG, FSEM



Important notice:

This product should not be modified in any way and is intended for use by qualified and trained personnel, in compliance with national and local laws.

	<p style="text-align: center;">⚠ WARNING ⚠</p> <p style="text-align: center;">RISK OF SHOCK, DISCONNECT POWER BEFORE INSTALLATION.</p>
---	--

Instructions:

1. Insert cable gland in clearance or threaded hole (Figure 1).
2. Tighten locknut, when applicable (Figure 2).

Figure 1

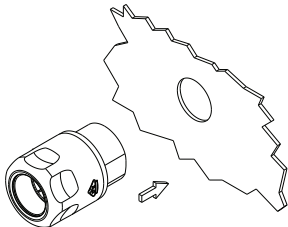
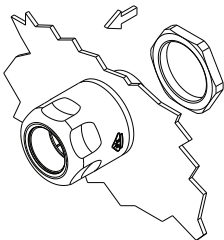


Figure 2



3. Expose screening - FSEM only (Figure 3).
4. Insert cable (Figure 4).
5. Tighten cap nut (Figure 5).

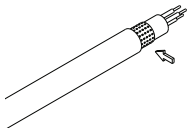


Figure 3

FOR FSEM SERIES ONLY.

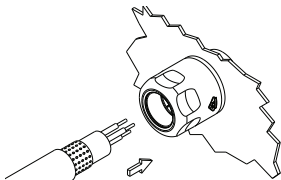


Figure 4

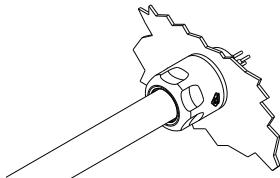


Figure 5

Important notice:

- To ensure ingress protection, use suitable gasket and locknut when required.
- ABB Inc. will take no responsibility for any damage, injury or loss caused where products have not been installed or used as detailed in these instructions.

We reserve the right to make technical changes or modify the contents of this document without prior notice. With regard to purchase orders, the agreed particulars shall prevail. ABB Inc. does not accept any responsibility whatsoever for potential errors or possible lack of information in this document.

We reserve all rights in this document and in the subject matter and illustrations contained therein. Any reproduction, disclosure to third parties or utilization of its contents – in whole or in parts – is forbidden without prior written consent of ABB Inc. Copyright© 2017 ABB Inc. All rights reserved

ABB Inc.
Electrification Products
Memphis, Tennessee
USA

abb.com/cableglands