
 TECHNICAL DATA SHEET

Cable Tie, detectable

NDT and PDT series




Cable ties are primarily used to cinch wires and cables together to form a neat and organized bundle.

Certifications / Standards:


3-Part Specification: 26 05 84
Tools and Calculators

Features:

- Detectable by metal detectors, X-ray equipment and visual detection
- Specially formulated high metallic density
- Engineered metallic content is formulated for higher detection
- 316 stainless steel barb is corrosion resistant and helps provide greater longevity

Typical applications:

- Food and beverage processing
- Pharmaceutical production
- Chemical and compounds manufacturing
- Tobacco processing
- Tire and airbag manufacturing
- Any other industry sensitive to contamination and using detection equipment

Conforms to:

- RoHS (Restriction of Hazardous Substance)
 - European Directive 2011/65 and Commission Delegated Directive 2015/863

Materials & Finishes

- NDT: Nylon, UV-resistant
- PDT: Chemical-resistant polypropylene
- Colors: blue, brown and natural (gray)

Ratings:

- Minimum installation temperature: -20°C (-4°F)
- Minimum operating temperature: -40°C (-40°F)
- Maximum operating temperature: 85°C (185°F)

Cable ties, detectable:
NDT and PDT series

Product selection									
Part no:	Figure	Min. bundle diameter in. (mm)	Max. bundle diameter in. (mm)	Tensile strength lbs. (N)	A in. (mm)	B in. (mm)	C in. (mm)	D in. (mm)	E in. (mm)
TY523M-NDT	1	0.06 (1.5)	0.63 (16)	11 (50)	3.6 (92)	0.09 (2.3)	0.15 (3.9)	0.19 (4.7)	0.035 (0.9)
TY523M-PDT				11 (50)	3.6 (92)	0.09 (2.3)	0.15 (3.9)	0.19 (4.7)	0.035 (0.9)
TY524M-NDT		0.079 (2)	1.38 (35)	30 (133)	5.3 (137)	0.14 (3.6)	0.18 (4.6)	0.25 (6.4)	0.043 (1.1)
TY525M-NDT		0.12 (3)	1.77 (45)	50 (222)	7.2 (181)	0.18 (4.6)	0.22 (5.6)	0.32 (8.1)	0.047 (1.2)
TY525M-PDT				30 (135)					
TY5253M-NDT	2	0.12 (3)	3.0 (76)	50 (222)	11.4 (289)	0.19 (4.7)	0.21 (5.3)	0.31 (7.8)	
TY527M-NDT				120 (534)	13.5 (343)	0.27 (6.9)	0.32 [8.1]	0.48 (12.2)	0.06 (1.5)
TY527M-PDT		60 (267)							
TY528M-NDT		0.19 (4.8)	4.01 (102)	50 (222)	14.2 (361)	0.18 (4.7)	0.22 (5.5)	0.32 (8.2)	0.047 (1.2)
TY528M-PDT				30 (135)					

Note: Product must be installed in accordance with applicable national and local electrical codes.

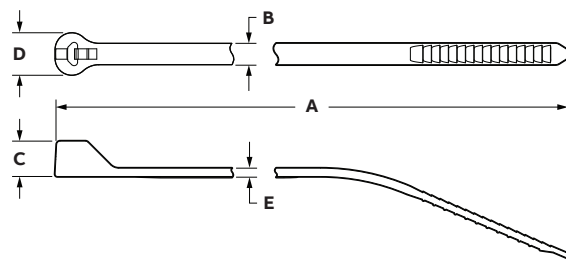


Figure 1

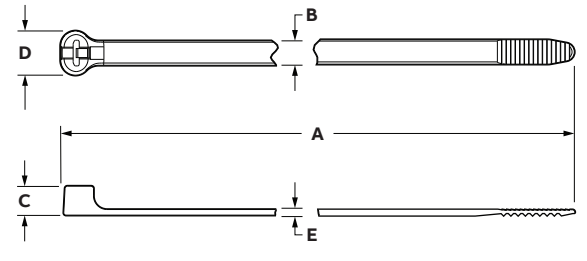


Figure 2

