

---

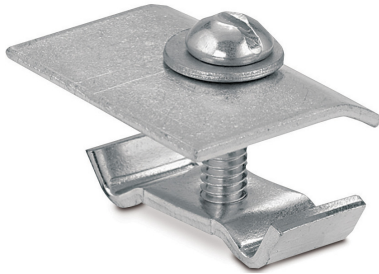
 TECHNICAL DATA SHEET

# Barrier strip clamp

## Metallic

### T&B® Cable Tray

Barrier strip clamps mount barrier strips to ladder rungs and ventilated through bottoms.




---

**Installation:**

- Complete mounting hardware supplied (screw, washer, clamp, nut)

---

**Materials/Finishes:**

- Zinc-plated steel (pre-galvanized)
- Stainless steel 316

Product selection	
Part no:	Material
SPW-BSC	Zinc-plated steel
SSW-BSC	Stainless steel 316

Note: Product must be installed in accordance with applicable national and local electrical codes.

