

## TECHNICAL DATA SHEET

# Cover Clamp, Raised

## T&B® Cable Tray

Raised cover clamp designed to raise cover above tray for added ventilation.

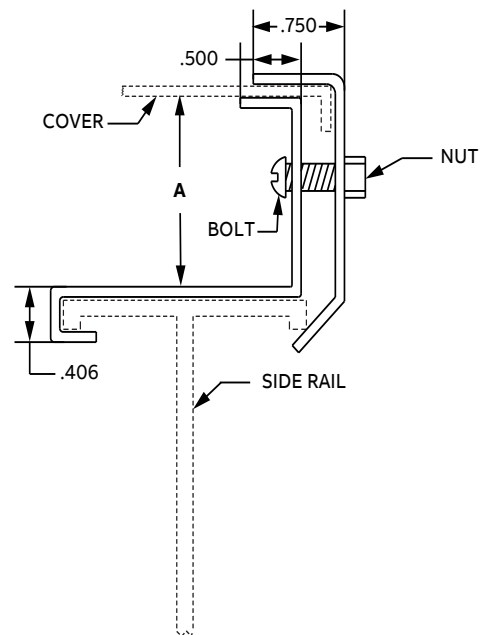


### Application:

- For straight section and PFC and SFC covers only.
- For indoor application only

### Materials:

- Aluminum



### Product selection

Part no:	Material	Cover series	A Cover offset in (mm)
ABW31RCC	Aluminum	3	1 (25.4)
ABW32RCC	Aluminum	3	2 (50.8)
ABW33RCC	Aluminum	3	3 (76.2)

Note: Product must be installed in accordance with applicable national and local electrical codes.