
 TECHNICAL DATA SHEET

Compression couplings, threadless

Malleable iron / Zinc plated

Steel City®


Compression couplings are for use on threaded conduit.

Certifications / Standards:


3-Part Specification: 26 05 33.53
End User Tools

Features:

- Heavy duty iron bodies with continuous threading
- Extra-thick electro-plated zinc finish
- Dependable pipe stop

Applications:

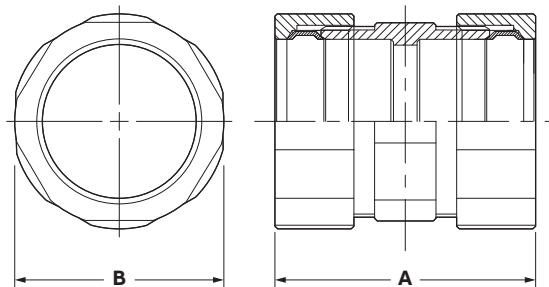
- Used to join two lengths of RMC without need for threading

Conforms to:

- UL Listed
 - File number: E-23018 ½"-1¼"

Materials / Finishes:
Sub paragraph:

- Material: Malleable iron
- Finish: Zinc plated



Product selection - inches

Part no:	Conduit Trade Size	Length A	Width B
HK 401	½	1.781	1.125
HK 402	¾	1.969	1.375
HK 403	1	2.125	1.688
HK 404	1¼	2.578	2.156
HK 405	1½	2.718	2.359
HK 406	2	3.000	2.750
HK 407	2½	6.250	4.125
HK 408	3	6.250	4.500
HK 409	3½	6.170	5.500
HK 410	4	6.420	5.938

Note: Product must be installed in accordance with applicable national and local electrical codes.