

TECHNICAL DATA SHEET - INTERACTIVE PDF

Terminals, ferrules

Covered and Bare

Sta-Kon®



01

02

03

01 Covered ferrule
02 Covered twin ferrule
03 Bare ferrule

Features:

- Designed to be mechanically crimped onto the ends of stranded wires
- Helps ensure reliable electrical connections when terminating conductors in screw clamp terminal blocks
- Helps prevent fraying and breaking of wire strands and helps minimize the possibility of an unreliable connection
- Covered ferrules help prevent conductor breakage due to bending, wire stress or vibration, while facilitating wire insertions into the terminal block clamp
- Preferred alternative to twisting wire strands or tinning the wire end before terminating into a terminal block
- Meets emerging global standards, requiring wire-to-metric style terminal block installations to be terminated with a "pin" style terminal

Covered and bare furnished ferrules are for wire termination of copper conductors ranging from 26 AWG to 1/0 AWG

Certifications / Standards:



3-Part Specification: 26 05 83.11
Tools and Calculators

Conforms to:

- RoHS (Restriction of Hazardous Substance)
 - European Directive 2011/65 and Commission Delegated Directive 2015/863

Material / Finishes:

- Electrolytic copper with electro-tin plating
- Polypropylene

Installation tool:

- FER9502

Table data:

Terminals, ferrules

- [Covered](#)
- [Covered, alternate color](#)
- [Double ferrule](#)
- [Bare](#)

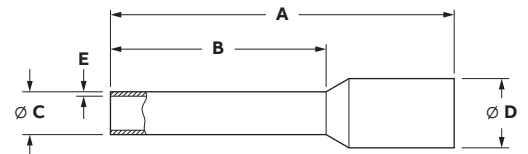
Terminals, ferrules

Covered

Product Selection													
Part No.	Color	Qty	A		B		C		D		AWG	mm ²	Wire class
			inch (mm)	inch (mm)	inch (mm)	inch (mm)	inch (mm)	inch (mm)					
F2020	White	500	0.45	0.24	0.04	0.10	0.006	20	0.5	B,C,G,H,I,K			
F2021	White	500	0.53	0.32	0.04	0.10	0.006	20	0.5	B,C,G,H,I,K			
F2022	White	500	0.61	0.39	0.04	0.10	0.006	20	0.5	B,C,G,H,I,K			
F2023	Gray	500	0.47	0.24	0.05	0.11	0.006	18	0.75	B,C,G,H,I,K			
F2024	Gray	500	0.55	0.32	0.05	0.11	0.006	18	0.75	B,C,G,H,I,K			
F2025	Gray	500	0.63	0.39	0.05	0.11	0.006	18	0.75	B,C,G,H,I,K			
F2026	Gray	500	0.71	0.47	0.05	0.11	0.006	18	0.75	B,C,G,H,I,K			
F2027	Red	500	0.49	0.24	0.06	0.12	0.006	18-17	1	B,C,G,H,I,K			
F2028	Red	500	0.57	0.32	0.06	0.12	0.006	18-17	1	B,C,G,H,I,K			
F2029	Red	500	0.65	0.39	0.06	0.12	0.006	18-17	1	B,C,G,H,I,K			
F2030	Red	500	0.73	0.47	0.06	0.12	0.006	18-17	1	B,C,G,H,I,K			
F2031	Black	500	0.57	0.32	0.07	0.13	0.006	16	1.5	B,C,G,H,I,K			
F2032	Black	500	0.65	0.39	0.07	0.13	0.006	16	1.5	B,C,G,H,I,K			
F2033	Black	500	0.73	0.47	0.07	0.13	0.006	16	1.5	B,C,G,H,I,K			
F2034	Black	500	0.57	0.71	0.07	0.13	0.006	16	1.5	B,C,G,H,I,K			
F2035	Blue	500	0.65	0.32	0.09	0.17	0.006	14	2.5	B,C,G,H,I,K			
F2036	Blue	500	0.97	0.47	0.09	0.17	0.006	14	2.5	B,C,G,H,I,K			
F2037	Blue	500	0.59	0.71	0.09	0.17	0.006	14	2.5	B,C,G,H,I,K			
F2038	Gray	500	0.75	0.39	0.11	0.19	0.008	12	4	B,C,G,H,I,K			
F2039	Gray	500	0.98	0.47	0.11	0.19	0.008	12	4	B,C,G,H,I,K			
F2040	Gray	100	0.69	0.71	0.11	0.19	0.008	12	4	B,C,G,H,I,K			
F2041	Yellow	100	0.79	0.47	0.14	0.24	0.008	10	6	B,C,G,H,I,K			
F2042	Yellow	100	0.99	0.71	0.14	0.24	0.008	10	6	B,C,G,H,I,K			
F2043	Red	100	0.83	0.47	0.18	0.24	0.008	8	10	B,C,G,H,I,K			
F2044	Red	100	1.1	0.71	0.18	0.24	0.008	8	10	B,C,G,H,I,K			
F2045	Blue	100	0.91	0.47	0.24	0.35	0.008	6	16	B,C,G,H,I,K			
F2046	Blue	50	1.14	0.71	0.24	0.35	0.008	6	16	B,C,G,H,I,K			
F2047	Yellow	50	1.14	0.63	0.30	0.43	0.008	4	25	B,C,G,H,I,K			
F2048	Yellow	50	1.22	0.71	0.30	0.43	0.008	4	25	B,C,G,H,I,K			
F2049	Yellow	50	1.38	0.87	0.30	0.43	0.008	4	25	B,C,G,H,I,K			
F2050	Red	50	1.18	0.63	0.34	0.49	0.008	2	35	B,C,G,H,I,K			
F2051	Red	50	1.26	0.71	0.34	0.49	0.008	2	35	B,C,G,H,I,K			
F2052	Red	50	1.54	0.98	0.34	0.49	0.008	2	35	B,C,G,H,I,K			
F2053	Blue	50	1.42	0.79	0.41	0.59	0.014	1	50	B,C,G,H,I,K			
F2054	Blue	50	1.61	0.98	0.41	0.59	0.014	1	50	B,C,G,H,I,K			
F2055*	Yellow	—	—	—	0.50	0.62	0.016	2/0	70	B,C,G,H,I,K			
F2057*	Red	—	1.73	0.98	0.58	0.70	0.016	3/0	95	B,C,G,H,I,K			
F2058*	Blue	—	1.89	1.06	0.66	0.82	0.02	250 MCM	120	B,C,G,H,I,K			
F2059*	Yellow	—	2.28	1.26	0.74	0.89	0.02	300 MCM	150	B,C,G,H,I,K			

Note: Product must be installed in accordance with applicable national and local electrical codes. Dimensions shown are nominal and should only be used as a reference.

* Not UL Listed



Terminals, ferrules

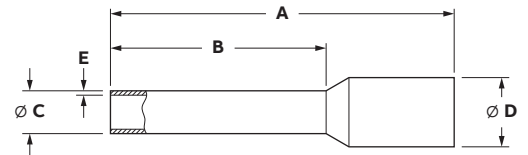
Covered, alternate color

Product Selection

Part No.	Color	Qty	A		B		C		D		AWG	mm ²	Wire class
			inch (mm)	inch (mm)	inch (mm)	inch (mm)	inch (mm)	inch (mm)					
F4000	Orange	500	0.57	0.315	0.04	0.10	0.006	20	0.5	B,C,G,H,I,K			
F4001	White	500	0.57	0.315	0.05	0.11	0.006	18	0.75	B,C,G,H,I,K			
F4002	Yellow	500	0.57	0.315	0.06	0.12	0.006	18-17	1	B,C,G,H,I,K			
F4003	Red	500	0.57	0.315	0.07	0.13	0.006	16	1.5	B,C,G,H,I,K			
F4004	Grey	500	0.41	0.236	0.03	0.079	0.01	26	0.14	B,C,G,H,I,K			
F4005	Grey	500	0.49	0.315	0.03	0.079	0.01	26	0.14	B,C,G,H,I,K			
F4006	Yellow	500	0.41	0.236	0.03	0.079	0.01	24	0.25	B,C			
F4007	Yellow	500	0.49	0.315	0.03	0.079	0.01	24	0.25	B,C			
F4008	Pink	500	0.41	0.236	0.03	0.079	0.01	22	0.34	B,C			
F4009	Pink	500	0.49	0.315	0.03	0.079	0.01	22	0.34	B,C			
F4020*	Blue	500	0.57	0.315	0.09	0.17	0.006	14	2.5	B,C			
F4021*	White	500	0.57	0.315	0.04	0.10	0.006	20	0.5	B,C			
F4023	Light Blue	500	0.57	0.315	0.05	0.11	0.006	18	0.75	B,C			
F4024*	Red	500	0.57	0.315	0.06	0.12	0.006	18-17	1	B,C			
F4027*	Black	500	0.57	0.315	0.07	0.13	0.006	16	1.5	B,C			
F4028	Grey	500	0.57	0.315	0.09	0.17	0.006	14	2.5	B,C			

Note: Product must be installed in accordance with applicable national and local electrical codes.

* Not UL Listed



Terminals, ferrules

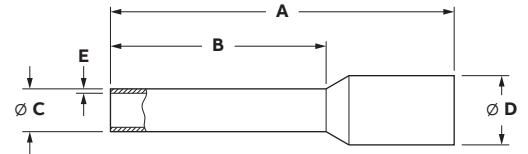
Double ferrule

Product Selection

Part No.	Color	Qty	A		B		C		D		AWG	mm ²	Wire class
			inch (mm)	inch (mm)	inch (mm)	inch (mm)	inch (mm)	inch (mm)					
F8000	White	500	0.59	0.315	0.06	0.18	0.01	2x20	2x.05	B,C			
F8001	Gray	500	0.59	0.315	0.07	0.20	0.01	2x18	2x.075	B,C			
F8002	Gray	500	0.67	0.394	0.07	0.20	0.006	2x18	2x.075	B,C			
F8003	Red	500	0.59	0.315	0.08	0.20	0.006	2x17	2x1.0	B,C,G,H,I,K			
F8005	Red	500	0.67	0.394	0.08	0.20	0.006	2x17	2x1.0	B,C,G,H,I,K			
F8006	Black	500	0.63	0.315	0.09	0.25	0.006	2x16	2x1.5	B,C,G,H,I,K			
F8007	Black	500	0.79	0.472	0.09	0.25	0.006	2x16	2x1.5	B,C,G,H,I,K			
F8008	Blue	500	0.73	0.394	0.14	0.30	0.006	2x14	2x2.5	B,C,G,H,I,K			
F8009	Blue	500	0.85	0.512	0.14	0.30	0.006	2x14	2x2.5	B,C,G,H,I,K			
F8010	Gray	500	0.91	0.472	0.15	0.34	0.006	2x12	2x4.0	B,C,G,H,I,K			
F8011*	Yellow	500	0.98	0.551	0.19	0.38	0.008	2x10	2x6.0	B,C,G,H,I,K			

Note: Product must be installed in accordance with applicable national and local electrical codes.

* Not UL Listed



Terminals, ferrules

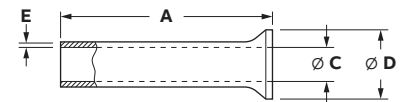
Bare

Product Selection

Part No.	Qty	A inch (mm)	C inch (mm)	D inch (mm)	E inch (mm)	AWG	mm ²	Wire class
F9000*	1000	0.20	0.03	0.07	0.006	24	0.25	B,C,G,H,I,K
F9001	1000	0.32	0.04	0.08	0.006	20	0.5	B,C,G,H,I,K
F9002	1000	0.39	0.04	0.08	0.006	20	0.5	B,C,G,H,I,K
F9003	1000	0.24	0.05	0.09	0.006	18	0.75	B,C,G,H,I,K
F9004	1000	0.39	0.05	0.09	0.006	18	0.75	B,C,G,H,I,K
F9005	1000	0.24	0.06	0.10	0.006	17	1	B,C,G,H,I,K
F9006	1000	0.39	0.06	0.10	0.006	17	1	B,C,G,H,I,K
F9007	1000	0.28	0.07	0.11	0.006	16	1.5	B,C,G,H,I,K
F9008	1000	0.39	0.07	0.11	0.006	16	1.5	B,C,G,H,I,K
F9009	1000	0.47	0.07	0.11	0.006	16	1.5	B,C,G,H,I,K
F9010	1000	0.71	0.07	0.11	0.006	16	1.5	B,C,G,H,I,K
F9011	1000	0.28	0.09	0.14	0.006	14	2.5	B,C,G,H,I,K
F9012	1000	0.39	0.09	0.14	0.006	14	2.5	B,C,G,H,I,K
F9013	1000	0.47	0.09	0.14	0.006	14	2.5	B,C,G,H,I,K
F9014	1000	0.71	0.09	0.14	0.006	14	2.5	B,C,G,H,I,K
F9015	1000	0.35	0.11	0.16	0.008	12	4	B,C,G,H,I,K
F9016	1000	0.47	0.11	0.16	0.008	12	4	B,C
F9017	1000	0.59	0.11	0.16	0.008	12	4	B,C
F9018	1000	0.71	0.11	0.16	0.008	12	4	B,C
F9019	1000	0.47	0.14	0.19	0.008	10	6	B,C
F9020	1000	0.59	0.14	0.19	0.008	10	6	B,C
F9021	1000	0.71	0.14	0.19	0.008	10	6	B,C
F9022	500	0.47	0.18	0.23	0.008	8	10	B,C
F9023	500	0.59	0.18	0.23	0.008	8	10	B,C
F9024	500	0.71	0.18	0.23	0.008	8	10	B,C
F9025	250	0.47	0.23	0.30	0.008	6	16	B,C
F9026	250	0.59	0.23	0.30	0.008	6	16	B,C
F9027	250	0.71	0.23	0.30	0.008	6	16	B,C
F9028	250	0.98	0.23	0.30	0.008	6	16	B,C
F9029	250	1.26	0.23	0.30	0.008	6	16	B,C
F9030	100	0.59	0.29	0.37	0.01	4	25	B,C
F9031	100	0.71	0.29	0.37	0.01	4	25	B,C
F9032	100	0.98	0.29	0.37	0.01	4	25	B,C
F9033	100	1.26	0.29	0.37	0.01	4	25	B,C
F9034	100	0.71	0.33	0.43	0.01	2	35	B,C
F9035	100	0.98	0.33	0.43	0.01	2	35	B,C
F9036	100	1.26	0.33	0.43	0.01	2	35	B,C
F9037	100	0.71	0.41	0.51	0.012	1/0	50	B,C
F9038	100	0.98	0.41	0.51	0.012	1/0	50	B,C
F9039	100	1.18	0.41	0.51	0.012	1/0	50	B,C
F9040*	100	0.98	0.49	0.59	0.016	2/0	70	B,C
F9041*	100	1.26	0.49	0.59	0.016	2/0	70	B,C
F9042*	50	0.98	0.57	0.67	0.016	3/0	95	B,C
F9043*	50	1.18	0.57	0.67	0.016	3/0	95	B,C
F9044*	50	1.26	0.57	0.67	0.016	3/0	95	B,C
F9045*	50	1.26	0.65	0.75	0.02	4/0	120	B,C
F9046*	50	1.57	0.65	0.75	0.02	4/0	120	B,C
F9047*	—	—	0.73	0.827	0.02	300 Kcmil	150	B,C,G,H,I,K
F9048*	—	—	0.79	0.925	0.024	350 Kcmil	185	B,C,G,H,I,K
F9050*	—	—	0.90	1.016	0.024	500 Kcmil	240	B,C

Note: Product must be installed in accordance with applicable national and local electrical codes.

* Not UL Listed



electrification.us.abb.com (US/LATAM)
tnb.ca.abb.com (Canada)
abb.com

We reserve the right to make technical changes or modify the contents of this document without prior notice. With regard to purchase orders, the agreed particulars shall prevail. ABB does not accept any responsibility whatsoever for potential errors or possible lack of information in this document.

We reserve all rights in this document and in the subject matter and illustrations contained therein. Any reproduction – in whole or in part – is forbidden without prior written consent of ABB. © 2020 ABB Installation Products Inc. and/or its related companies. All Rights Reserved.

Product search 