

TECHNICAL DATA SHEET - INTERACTIVE PDF

Cable Tie, identification

18lb (80N) & 50lb (222N) identification ties

Ty-Rap®



Cable ties are primarily used to cinch wires and cables together to form a neat and organized bundle.

Certifications / Standards:



3-Part Specification: 26 05 84
End User Tools

—
Features:

- 316 stainless steel barb is corrosion resistant and helps provide greater longevity
- Marking tab used for identification

—
Recommended Installation tools:

For recommended tool for each part number, see chart on next page

- ERG50 / WT199 (MS90387-1)
 - Setting 1-3 for 18lb ties
 - Setting 6-8 for 50lb ties

—
Recommended Marking Pen

- Part number: WT163M-1-EU (GID # 7TCG009720R0015)
 - For marking on polyamide surfaces

—
Materials:

- Body - Nylon 6,6
- Color - Natural

Cable ties, identification

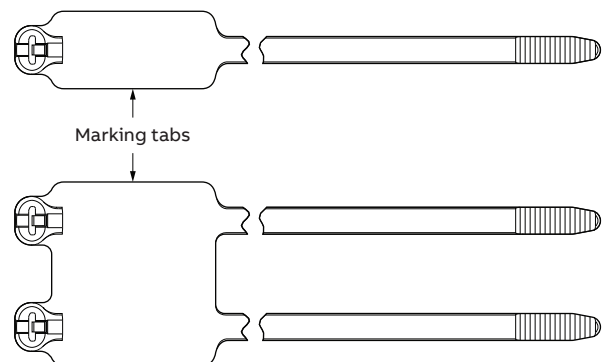
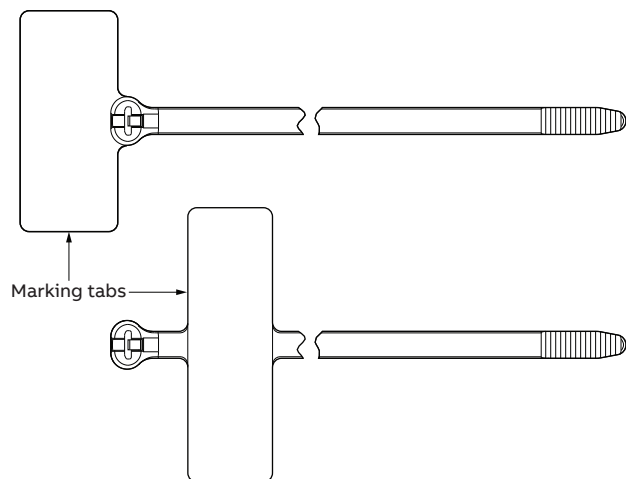
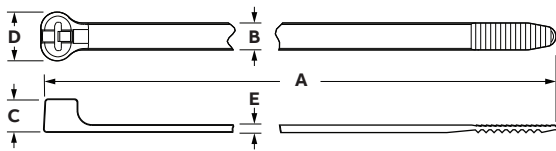
Sizes

Product selection

Part no. standard GID no.	Part no. bulk GID no.	Tag diameter inch (mm)	Min. Bundle diameter inch (mm)	Max. Bundle diameter inch (mm)	A		B		C		D		E	
					± 0.170 (4.3) inch (mm)	± 0.020 (0.51) inch (mm)	± 0.020 (0.51) inch (mm)	± 0.020 (0.51) inch (mm)	± 0.010 (0.25) inch (mm)	± 0.010 (0.25) inch (mm)	± 0.010 (0.25) inch (mm)	± 0.010 (0.25) inch (mm)		
TY551M* 7TAG009510R0065	TY51M* 7TAG009510R0046	1.0 x 0.3 (25 x 7.6)	0.06 (1.5)	0.63 (16)	3.6 (91)	0.10 (2.54)	0.15 (3.8)	0.19 (4.8)	0.04 (1.0)					
TY551MX 7TAG009510R0066	—	1.0 x 0.3 (25 x 7.6)	0.06 (1.5)	0.63 (16)	3.6 (91)	0.10 (2.54)	0.15 (3.8)	0.19 (4.8)	0.04 (1.0)					
TY5512M* 7TAG009510R0064	TY512M* 7TAG009510R0044	1.0 x 0.3 (25 x 7.6)	0.06 (1.5)	2.01 (51)	8.3 (211)	0.09 (2.3)	0.15 (3.8)	0.19 (4.8)	0.04 (1.0)					
—	TY512MX* 7TAG009000R0262	1.0 x 0.3 (25 x 7.6)	0.06 (1.5)	2.01 (51)	8.3 (211)	0.09 (2.3)	0.15 (3.8)	0.19 (4.8)	0.04 (1.0)					
TY553M* 7TAG009510R0069	TY53M* 7TAG009510R0052	0.8 x 0.4 (20 x 10)	0.06 (1.5)	0.63 (16)	3.6 (91)	0.10 (2.54)	0.15 (3.8)	0.19 (4.8)	0.04 (1.0)					
TY5532M* 7TAG009510R0067	TY532M* 7TAG009510R0050	0.8 x 0.4 (20 x 10)	0.06 (1.5)	2.01 (51)	8.0 (203)	0.09 (2.3)	0.15 (3.8)	0.19 (4.8)	0.04 (1.0)					
—	TY153M* 7TAG009510R0014	1.0 x .8 (25.4 x 20.3)	0.06 (1.5)	0.63 (16)	3.6 (91)	0.10 (2.54)	0.15 (3.8)	0.19 (4.8)	0.04 (1.0)					
TY546M 7TAG009510R0058	TY46M 7TAG009510R0018	1.1 x 0.5 (28 x 12.7)	1.00 (25.4)	1.75 (44.4)	7.3 (185)	0.19 (4.8)	0.22 (5.6)	0.32 (8.1)	0.04 (1.0)					
TY548M 7TAG009510R0063	TY48M 7TAG009510R0039	2.3 x 0.5 (58.4 x 12.7)	1.00 (25.4)	4.0 (102)	14.2 (361)	0.19 (4.8)	0.22 (5.6)	0.32 (8.1)	0.05 (1.3)					
—	TY48MX* 7TAG009510R0043	2.3 x 0.5 (58.4 x 12.7)	1.00 (25.4)	4.0 (102)	14.2 (361)	0.19 (4.8)	0.22 (5.6)	0.32 (8.1)	0.05 (1.3)					
TY546MD 7TAG009510R0059	TY46MD 7TAG009510R0025	1.1 x 1.2 (28 x 30.5)	1.00 (25.4)	1.77 (45)	7.3 (185)	0.19 (4.8)	0.22 (5.6)	0.30 (7.6)	0.05 (1.3)					
—	TY46MDX* 7TAG009510R0030	1.1 x 1.2 (28 x 30.5)	1.00 (25.4)	1.77 (45)	7.3 (185)	0.19 (4.8)	0.22 (5.6)	0.30 (7.6)	0.05 (1.3)					
TY546MT 7TAG009510R0061	TY46MT 7TAG009510R0033	1.8 x 1.1 (46 x 28)	1.00 (25.4)	1.77 (45)	7.3 (185)	0.19 (4.8)	0.22 (5.6)	0.30 (7.6)	0.05 (1.3)					
—	TY46MTX* 7TAG009510R0037	1.8 x 1.1 (46 x 28)	1.00 (25.4)	1.77 (45)	7.3 (185)	0.19 (4.8)	0.22 (5.6)	0.30 (7.6)	0.05 (1.3)					
TY546MF 7TAG009510R0060	TY46MF 7TAG009510R0031	2.5 x 1.1 (63.5 x 28)	1.00 (25.4)	1.77 (45)	7.3 (185)	0.19 (4.8)	0.22 (5.6)	0.30 (7.6)	0.05 (1.3)					

Note: Product must be installed in accordance with applicable national and local electrical codes.

*Not all certifications apply.



Cable ties, identification

Strength and temperatures

Product selection					
Part No. standard GID No.	Part no. bulk GID no.	Tensile strength lbs. (N)	Minimum operating temperature °F (°C)	Maximum operating temperature °F (°C)	Minimum installation temperature °F (°C)
TY551M*	TY51M*	18	-76	185	-4
7TAG009510R0065	7TAG009510R0046	(80)	(-60)	(85)	(-20)
TY551MX	—	18	-76	221	-40
7TAG009510R0066		(80)	(-60)	(105)	(-40)
TY5512M*	TY512M*	18	-76	185	-4
7TAG009510R0064	7TAG009510R0044	(80)	(-60)	(85)	(-20)
—	TY512MX*	18	-76	221	-22
	7TAG009000R0262	(80)	(-60)	(105)	(-30)
TY553M*	TY53M*	18	-76	185	-4
7TAG009510R0069	7TAG009510R0052	(80)	(-60)	(85)	(-20)
TY5532M*	TY532M*	18	-76	185	-4
7TAG009510R0067	7TAG009510R0050	(80)	(-60)	(85)	(-20)
—	TY153M*	18	-76	185	-4
	7TAG009510R0014	(80)	(-60)	(85)	(-20)
TY546M	TY46M	49	-76	185	-4
7TAG009510R0058	7TAG009510R0018	(220)	(-60)	(85)	(-20)
TY548M	TY48M	49	-76	185	-4
7TAG009510R0063	7TAG009510R0039	(220)	(-60)	(85)	(-20)
—	TY48MX*	49	-76	221	-22
	7TAG009510R0043	(220)	(-60)	(105)	(-30)
TY546MD	TY46MD	49	-76	185	-4
7TAG009510R0059	7TAG009510R0025	(220)	(-60)	(85)	(-20)
—	TY46MDX*	49	-76	221	-22
	7TAG009510R0030	(220)	(-60)	(105)	(-30)
TY546MT	TY46MT	49	-76	185	-4
7TAG009510R0061	7TAG009510R0033	(220)	(-60)	(85)	(-20)
—	TY46MTX*	49	-76	221	-40
	7TAG009510R0037	(220)	(-60)	(105)	(-40)
TY546MF	TY46MF	49	-76	185	-4
7TAG009510R0060	7TAG009510R0031	(220)	(-60)	(85)	(-20)

Note: Product must be installed in accordance with applicable national and local electrical codes.

*Not all certifications apply.