

TECHNICAL DATA SHEET - INTERACTIVE PDF

# Conduit bodies, LL, LR, and LRL-style

## For EMT conduit

**redodot**®

LL, LR, and LRL-style conduit bodies allow 90° bends in conduit runs and provide easier access to wiring.

**Certifications / Standards:****3-Part Specification: 26 05 33.52****End User Tools**

01 LL-style  
02 LR-style

**Features & Benefits:**

- Precision-cast and machined surfaces facilitating safer wire pulling
- Clean cover edges for good gasket sealing
- Set screw hubs help enable trouble-free installation for EMT conduit
- Retained deep-slotted steel cover screws designed for faster installation
- Clear UL, CSA, cULus and cubic content markings help speed approval by inspectors

**Applications:**

- Connect conduit sections
- Act as pull outlets when conductors are being installed
- Provides easy access for splices in branch conductors
- Makes 90° bends in conduit runs
- Provide access to wiring for maintenance and potential for future changes

**Conforms to:**

- UL 514B
  - UL File: E28688
- CSA C22.2 No.18
  - CSA File: 16807

**Material**

- Conduit body: Die cast aluminum alloy
- Gasket: Neoprene
- Cover: Stamped aluminum alloy
- Screws: Zinc-plated low carbon steel
- Finish: Powder coated

## LL-Style conduit bodies

### Product selection - inches

Part no. (Without cover and gasket)	Hub Size	A	B	C	Volume (in <sup>3</sup> )
BLL-1*	½"	4.39	1.90	1.35	4.3
BLL-2*	¾"	5.17	2.22	1.54	7.3
BLL-3*	1"	5.92	2.48	1.91	12.3

Note: Product must be installed in accordance with applicable national and local electrical codes.

\* cULus listed only

## LR-Style conduit bodies

### Product selection - inches

Part no. (Without cover and gasket)	Hub Size	A	B	C	Volume (in <sup>3</sup> )
BLR-1*	½"	4.39	1.90	1.35	4.3
BLR-2*	¾"	5.17	2.22	1.54	7.3
BLR-3*	1"	5.92	2.48	1.91	12.3

Note: Product must be installed in accordance with applicable national and local electrical codes.

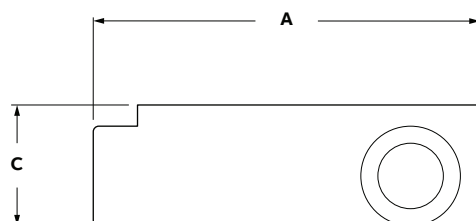
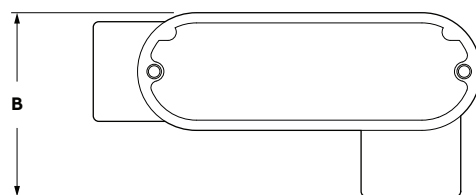
\* cULus listed only

## LRL- Style conduit bodies, left and right opening

### Product selection - inches

Part no. (Includes cover and gasket)	Hub Size	A	B	C	Volume (in <sup>3</sup> )
BLRL-1	½"	4.40	2.07	1.42	4.3
BLRL-2	¾"	5.08	2.28	1.65	7.3
BLRL-3	1"	5.80	2.48	1.91	12.2

Note: Product must be installed in accordance with applicable national and local electrical codes.



\*LL shown LR opposite