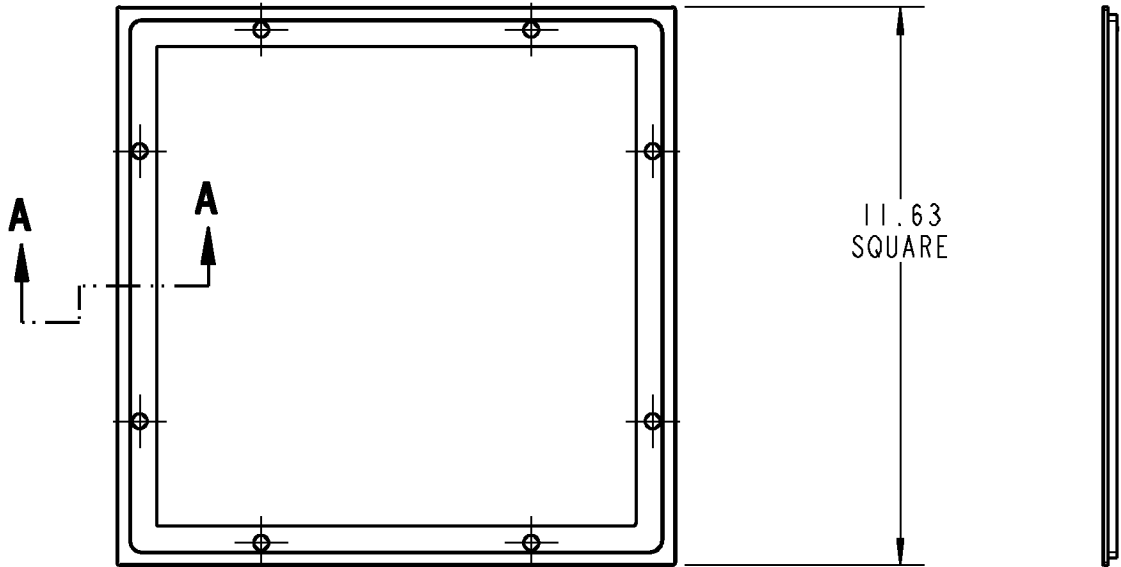
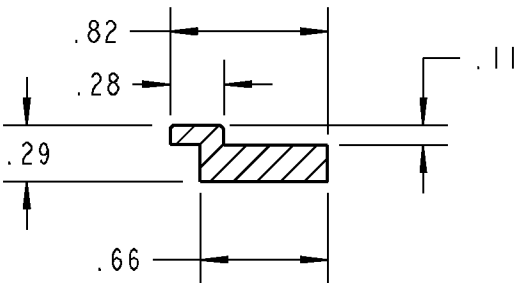


Steel City



QTY. 8 FLAT HEAD
1/4-20 X 1-1/2 LEVELING SCREWS
FURNISHED WITH 668-TRIM-XXX.



SECTION A-A

FEATURES:

1. ALL METAL CONSTRUCTION. DIE CAST FROM A HIGH STRENGTH ZINC ALLOY.
2. DURABLE POWDER COATED FINISH.
3. PROVIDES AN OPTION TO INSTALL THE 668-CST-XXX COVER FLUSH TO THE FLOOR WHEN USED WITH THE 668-S FLOOR BOX. IT IS NOT INTENDED FOR USE WITH ANY OTHER FLOOR BOX OR COVER.
4. AVAILABLE IN FOUR COATED FINISHES:
 - XXX DENOTES COLOR
 - BLK = BLACK COLOR
 - BRN = BROWN COLOR
 - BGE = BEIGE COLOR
 - BRS = BRASS COLOR
 - ALM = ALUMINUM COLOR



RELATED SALES DRAWINGS:

668-S FLOOR BOX : WSD-000083
668-CST-XXX COVER: WSD-000086

REFERENCE INSTRUCTION SHEET:

668-CST-XXX FLUSH TRIM RING: TA02960

Thomas & Betts
www.tnb.com

GENERAL NOTES		DESCRIPTION: 668-TRIM-XXX FLUSH TRIM RING OPTIONAL			
1. ALL DIMENSIONS ARE FOR REFERENCE ONLY. 2. DIMENSIONS IN BRACKETS [] ARE IN METRIC UNITS.					
REVISIONS		ORIGINAL PROJECT NO / (ERN NO) SHEET NO: REV. NO: DRAWING NO: UD55551 / (2005084) 1 OF 1 2 WSD-000087			
2 SEE ERN (2005295) FOR APPROVAL SIGNATURES & RELEASE DATE. PROJECT NO: UD55551					