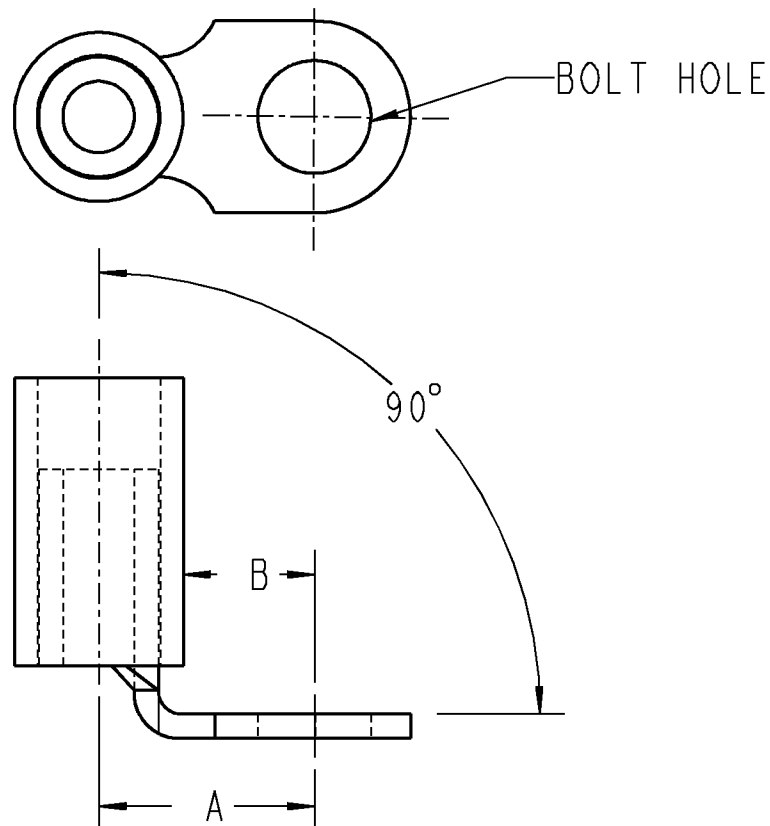




ALL DIMENSIONS ARE APPROXIMATE.

CATALOG No.	DIM. A	DIM. B	WIRE RANGE	BOLT HOLE
RC337U	.380±.03	.26±.03	12 - 10	#6



NOTES:

1. MATERIAL: ELECTROLYTIC COPPER
2. FINISH: TIN PLATED
3. INSULATOR: VINYL
4. SAME AS STANDARD T&B CATALOG NUMBER BUT WITH A "U" SUFFIX FOR 90° BEND.
5. INSTALLATION TOOLS: WT112M, WT145C, WT2000, ERG-2001 WT2130A

GENERAL NOTES

1. ALL DIMENSIONS ARE FOR REFERENCE ONLY.
2. DIMENSIONS IN BRACKETS [] ARE IN METRIC UNITS.

REVISIONS

SEE ERN (****)
FOR APPROVAL SIGNATURES
& RELEASE DATE.
PROJECT NO: ****

Thomas & Betts
www.tnb.com

DESCRIPTION: **VINYL INSULATED GRIP RING
TERMINAL, 90° BEND**

ORIGINAL PROJECT NO / (ERN NO)

TM401330 / (2007026)

SHEET NO:

1 OF 1

REV. NO:

-

DRAWING NO:

WSD-000286