

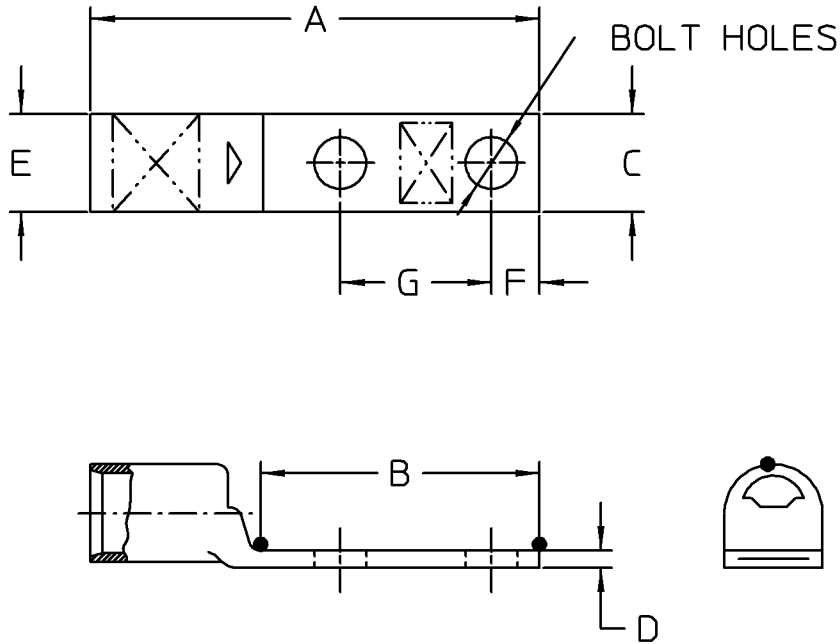
54211NT0628	3/0 AWG	ORANGE/50	3.665	2.565	.632	.125	.632	.375	1.750	3/8
54211NT	3/0 AWG	ORANGE/50	2.915	1.815	.632	.125	.632	.375	1.000	3/8
54266NT	3/0 AWG	ORANGE/50	2.881	1.781	.632	.125	.632	.375	1.000	5/16
54260NT0628	2/0 AWG	BLACK/45	3.565	2.565	.571	.141	.571	.375	1.750	3/8
54210NT	2/0 AWG	BLACK/45	2.815	1.815	.571	.141	.571	.375	1.000	3/8
54261NT	2/0 AWG	BLACK/45	2.656	1.656	.571	.141	.571	.375	.875	5/16
54209NT0516	1/0 AWG	PINK/42	2.731	1.781	.521	.141	.521	.375	1.000	5/16
54255NT	1/0 AWG	PINK/42	2.606	1.656	.521	.141	.521	.375	.875	5/16
54208NT0516	#1 STR	GREEN/37	2.631	1.781	.467	.106	.467	.375	1.000	5/16
54208NT	#1 STR	GREEN/37	2.037	1.187	.467	.106	.467	.250	.625	1/4
54207NT0416	#2-3 STR	BROWN/33	2.412	1.562	.410	.108	.410	.250	1.000	1/4
54207NT0412	#2-3 STR	BROWN/33	2.162	1.312	.410	.108	.410	.250	.750	1/4
54207NT	#2-3 STR	BROWN/33	2.037	1.187	.410	.108	.410	.250	.625	1/4
54206NT0316	#4 STR	GRAY/29	2.250	1.500	.365	.099	.365	.250	1.000	#10
54206NT0310	#4 STR	GRAY/29	1.875	1.125	.365	.099	.365	.250	.625	#10
CATALOG No.	WIRE SIZE	COLOR/CODE	A ±.030	B ±.015	C ±.015	D REF.	E O.D.	F ±.030	G ±.020	Bolt Hole

MATERIAL: HIGH CONDUCTIVITY WROUGHT COPPER

FINISH: ELECTRO TIN PLATE

UL LISTED AND CSA CERTIFIED

GENERAL NOTES			
1. DIMENSIONS IN PARENTHESES () ARE IN METRIC UNITS.			
REVISIONS		DESCRIPTION:	
SEE ERN xxxxxxxx FOR APPROVAL SIGNATURES PROJECT NO: CD55763		TWO HOLE NARROW TONGUE LUGS	
ORIGINAL PROJECT NO / (ERN NO)		SHEET NO:	REV. NO:
CD55763 / (2008805)		1 OF 2	—
DRAWING NO:		WSD-000386	



54228NT0616	1000 kcmil	N/A / 125	4.265	1.815	1.550	.300	1.550	.375	1.000	3/8
54228NT	1000 kcmil	N/A / 125	5.262	2.812	1.550	.300	1.550	.500	1.750	1/2
54223NT	750 kcmil	BLACK/106	5.037	2.812	1.330	.270	1.330	.500	1.750	1/2
54223NT0628	750 kcmil	BLACK/106	4.790	2.565	1.330	.270	1.330	.375	1.750	3/8
54286NT	500 kcmil	BROWN/87	4.812	2.812	1.100	.218	1.100	.500	1.750	1/2
54218NT	500 kcmil	BROWN/87	4.565	2.565	1.100	.218	1.100	.375	1.750	3/8
54282NT	350 kcmil	RED/71	4.362	2.812	.926	.177	.926	.500	1.750	1/2
54280NT	300 kcmil	WHITE/66	4.262	2.812	.850	.153	.850	.500	1.750	1/2
54214NT	300 kcmil	WHITE/66	3.265	1.815	.850	.153	.850	.375	1.000	3/8
54275NT	250 kcmil	YELLOW/62	4.162	2.812	.766	.140	.766	.500	1.750	1/2
54213NT	250 kcmil	YELLOW/62	3.165	1.815	.766	.140	.766	.375	1.000	3/8
54212NT0628	4/0 AWG	PURPLE/54	3.815	2.565	.701	.137	.701	.375	1.750	3/8
54212NT	4/0 AWG	PURPLE/54	3.065	1.815	.701	.137	.701	.375	1.000	3/8
CATALOG No.	WIRE SIZE	COLOR/CODE	A \pm .030	B \pm .015	C \pm .015	D REF.	E O.D.	F \pm .030	G \pm .030	Bolt Hole

MATERIAL: HIGH CONDUCTIVITY WROUGHT COPPER

FINISH: ELECTRO TIN PLATE

UL LISTED AND CSA CERTIFIED

GENERAL NOTES		Color-Keyed[®] Thomas & Betts www.tnb.com			
1. DIMENSIONS IN PARENTHESES () ARE IN METRIC UNITS.					
REVISIONS		DESCRIPTION: TWO HOLE NARROW TONGUE LUGS			
SEE ERN xxxxxxxx FOR APPROVAL SIGNATURES PROJECT NO: CD55763		ORIGINAL PROJECT NO / (ERN NO) CD55763 / (2008805)	SHEET NO: 2 OF 2	REV. NO: —	DRAWING NO: WSD-000386