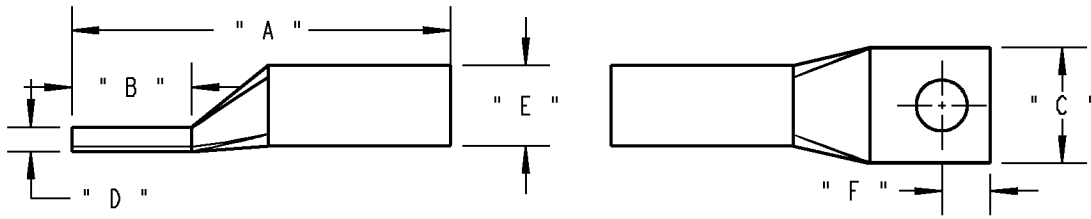




Blackburn



NOTE: CONNECTORS SUPPLIED WITH T&B OXIDE INHIBITOR COMPOUND IN WIRE BORE.
 DO NOT CLEAN TIN PLATED TONGUE.
 MADE OF HIGH-CONDUCTIVITY SEAMLESS ALUMINUM TUBING
 UL LISTED WHEN INSTALLED WITH BLACKBURN, BURNDY, T&B OR ANDERSON TOOL
 FOR CRIMPING TOOLS AND DIES RE-VIEW OUR CATALOG.

ATL750-12	750 Kcmil	1/2	5.40	1.35	2.13	0.39	1.50	0.50	YELLOW
ATL750-58	750 Kcmil	5/8	6.09	2.00	2.13	0.39	1.50	0.75	YELLOW
ATL600-12	600 Kcmil	1/2	5.90	2.00	1.92	0.37	1.35	0.75	BLACK
ATL500-58	500 Kcmil	5/8	5.77	2.00	1.79	0.37	1.27	0.75	PINK
ATL500-12	500 Kcmil	1/2	5.01	1.25	1.79	0.37	1.27	0.50	PINK
ATL400-58	400 Kcmil	5/8	5.17	1.37	1.64	0.37	1.18	0.62	GREEN
ATL350-12	350 Kcmil	1/2	4.88	1.31	1.52	0.33	1.08	0.50	BROWN
ATL300-12	300 Kcmil	1/2	4.21	1.31	1.39	0.28	0.98	0.50	BLUE
ATL300-38	300 Kcmil	3/8	4.25	1.31	1.39	0.28	0.98	0.37	BLUE
ATL250-12	250 Kcmil	1/2	4.11	1.25	1.29	0.26	0.91	0.50	RED
ATL40-12	4/0 STR	1/2	3.95	1.25	1.20	0.25	0.85	0.50	WHITE
ATL40-38	4/0 STR	3/8	3.80	1.11	1.20	0.25	0.85	0.37	WHITE
ATL30-12	3/0 STR	1/2	3.12	1.37	1.06	0.21	0.76	0.68	RUBY
ATL30-38	3/0 STR	3/8	2.81	1.06	1.06	0.21	0.76	0.43	RUBY
ATL20-12	2/0 STR	1/2	3.00	1.37	1.03	0.21	0.69	0.68	OLIVE
ATL20-38	2/0 STR	3/8	2.62	1.00	0.96	0.21	0.69	0.43	OLIVE
ATL10-12	1/0 STR	1/2	2.93	1.37	0.93	0.18	0.62	0.68	TAN
ATL10-38	1/0 STR	3/8	2.59	1.06	0.87	0.18	0.62	0.43	TAN
ATL10-516	1/0 STR	5/16	2.55	1.00	0.87	0.18	0.62	0.43	TAN
ATL1-38	1 STR	3/8	2.39	0.90	0.75	0.18	0.55	0.43	GOLD
ATL1-516	1 STR	5/16	2.33	0.87	0.75	0.18	0.55	0.43	GOLD
ATL2-38	2 STR	3/8	2.06	0.90	0.71	0.18	0.51	0.43	PINK
ATL2-516	2 STR	5/16	2.10	0.87	0.72	0.16	0.51	0.43	PINK
ATL2-14	2 STR	1/4	1.93	0.78	0.71	0.18	0.51	0.34	PINK
ATL4-38	4 STR	3/8	2.00	0.90	0.64	0.18	0.45	0.43	GREEN
ATL4-516	4 STR	5/16	2.06	0.99	0.64	0.18	0.45	0.43	GREEN
ATL4-14	4 STR	1/4	1.90	0.83	0.64	0.18	0.45	0.34	GREEN
ATL6-38	6 STR	3/8	1.85	0.90	0.62	0.09	0.34	0.43	GRAY
ATL6-14	6 STR	1/4	1.70	0.71	0.46	0.13	0.34	0.34	GRAY
ATL6-10	6 STR	10	1.54	0.56	0.46	0.13	0.34	0.21	GRAY
ATL8-14	8 STR	1/4	1.42	0.68	0.43	0.09	0.27	0.34	BLUE
ATL8-10	8 STR	10	1.28	0.59	0.40	0.09	0.27	0.21	BLUE
CAT NO	SIZE (AL OR CU)	STUD SIZE	A	B	C	D	E	F	BKB COLOR

GENERAL NOTES

- ALL DIMENSIONS ARE FOR REFERENCE ONLY.
- DIMENSIONS IN BRACKETS [] ARE IN METRIC UNITS.

REVISIONS

*** SEE ERN (****)
 FOR APPROVAL SIGNATURES
 & RELEASE DATE.
 PROJECT NO: ****

Thomas & Betts
 www.tnb.com

DESCRIPTION:

ATL Aluminum Lug

ORIGINAL PROJECT NO / (ERN NO)

BC55900 / (2010883)

SHEET NO:

1 OF 1

REV. NO:

0

DRAWING NO:

WSD-000516