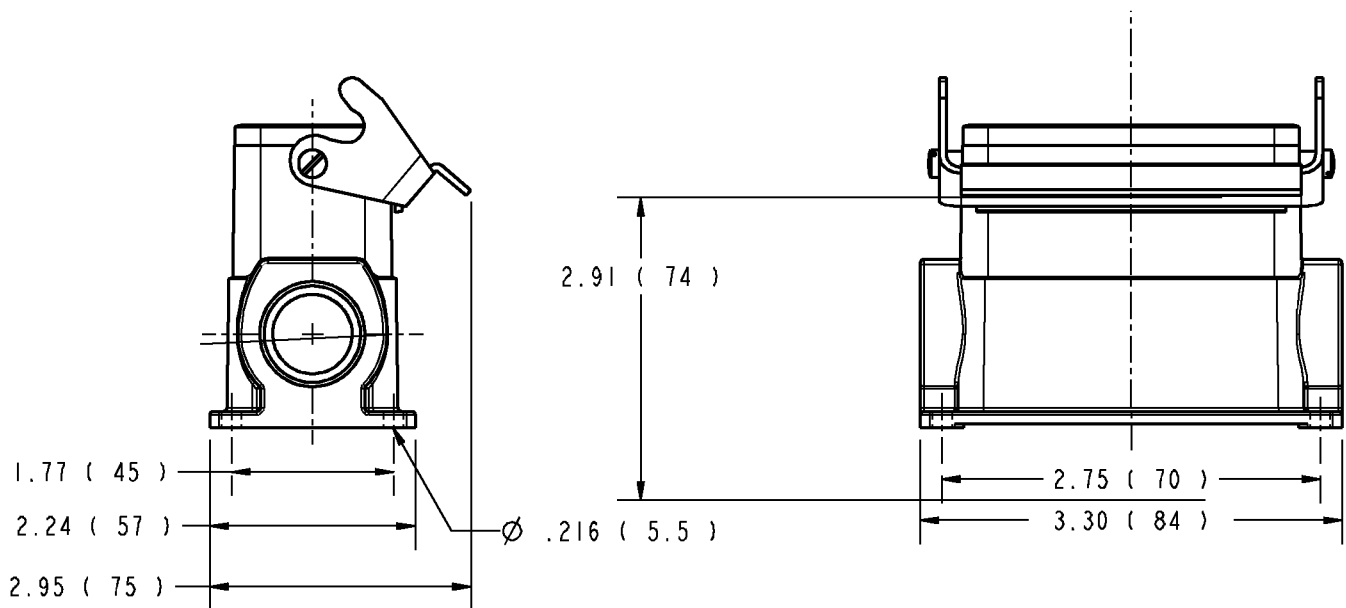



Thomas & Betts



CAT. # BB406MVH075

NOTES:

1. DIMENSIONS ARE IN INCHES (MILLIMETERS).
2. HOUSING: DIE CAST ALUMINUM WITH EPOXY POWDER COAT.
3. LOCKING LEVER: STEEL, ZINC AND CHROME PLATED
4. GASKET: EPDM
5. TEMPERATURE RANGE: -40°C TO 125°C (-40°F TO 257°F)
6. ENVIRONMENTAL RATING: IP65 IN LOCKED POSITION

GENERAL NOTES		 www.tnb.com			
1.	ALL DIMENSIONS ARE FOR REFERENCE ONLY.				
2.	DIMENSIONS IN BRACKETS [] ARE IN METRIC UNITS.				
REVISIONS		DESCRIPTION: BOX BASE SINGLE LEVER WITH COVER			
0	SEE ERN (****) FOR APPROVAL SIGNATURES & RELEASE DATE. PROJECT NO: ****				
ORIGINAL PROJECT NO / (ERN NO)		SHEET NO:	REV. NO:	DRAWING NO:	
TM400024 / (2012444)		1 OF 1	0	WSD-000592	