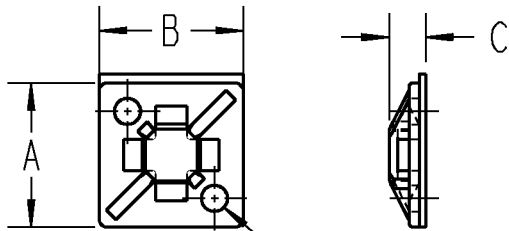


Ty-Rap

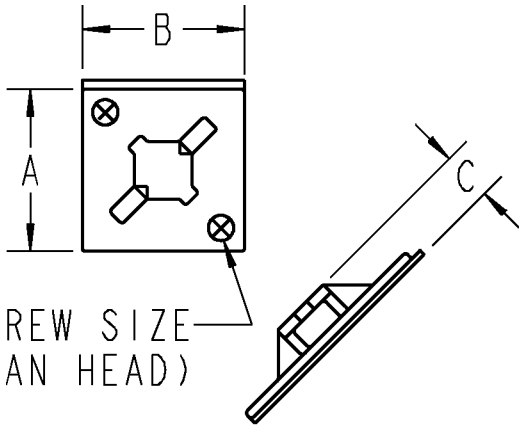
NOTICE:
 DUE TO VARIATIONS IN DETECTION EQUIPMENT SENSITIVITY AND DIFFERENCES
 IN FOOD DENSITY, DETECTABILITY TESTING OF THIS PRODUCT FOR THE
 INTENDED FOOD PROCESSING ENVIRONMENT IS RECOMMENDED BEFORE USING.

FIG. I



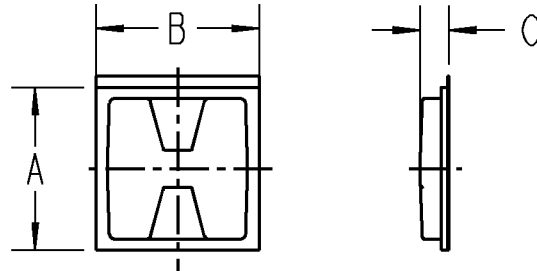
SCREW SIZE
 (PAN HEAD)

FIG. III



SCREW SIZE
 (PAN HEAD)

FIG. III



MATERIAL:

NDT SUFFIX - NYLON

PDT SUFFIX - POLYPROPYLENE

ADHESIVE: PRESSURE SENSITIVE FOAM

COLOR: BLUE

APPLY TO CLEAN, DRY SURFACE AT A
 TEMPERATURE OF 65°F (18°C) OR ABOVE.

STORE IN COOL, DRY PLACE BELOW
 76°F (24°C), AWAY FROM HEAT AND LIGHT.

DETECTABLE WITH METAL AND X-RAY
 DETECTION EQUIPMENT.

BULK PACK CATALOG NUMBERS IDENTIFIED IN TABLE,
 STANDARD PACK HAS A 5 AFTER THE TC (e.g. TC5342A-NDT).

TC347A-PDT	III	.30	1.125	1.125	.34	#8
TC347A-NDT	III	.30	1.125	1.125	.34	#8
TC344A-PDT	I	.14	.750	.750	.19	#5
TC344A-NDT	I	.14	.750	.750	.19	#5
TC342A-PDT	II	.19	1.125	1.125	.25	---
TC342A-NDT	II	.19	1.125	1.125	.25	---
CATALOG No.	FIG.	MAX. CABLE TIE WIDTH	A	B	C	SCREW SIZE

GENERAL NOTES

- ALL DIMENSIONS ARE FOR REFERENCE ONLY.
- DIMENSIONS IN BRACKETS [] ARE IN METRIC UNITS.

REVISIONS

** SEE ERN (****) FOR APPROVAL SIGNATURES & RELEASE DATE.
 PROJECT NO: ****

Thomas & Betts
 www.tnb.com

DESCRIPTION: **DETECTABLE MOUNTING BASES,
 ADHESIVE**

ORIGINAL PROJECT NO / (ERN NO)

009D000294 / (2013989)

SHEET NO:

1 OF 1

REV. NO:

**

DRAWING NO:

WSD-001087