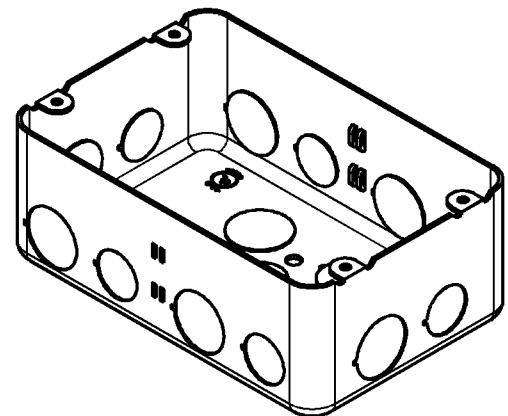
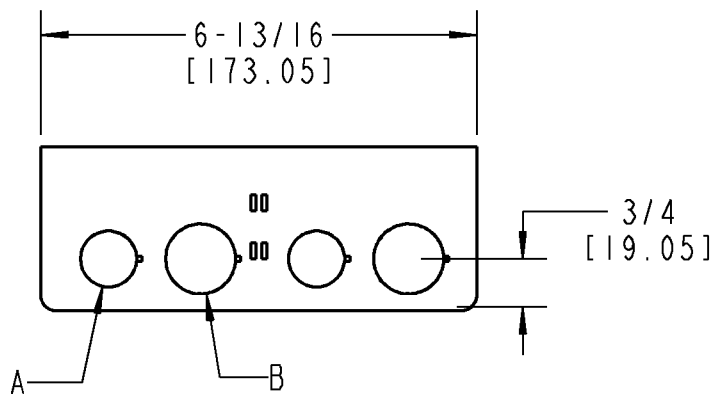
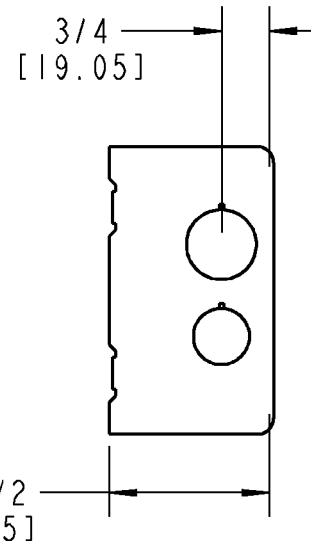
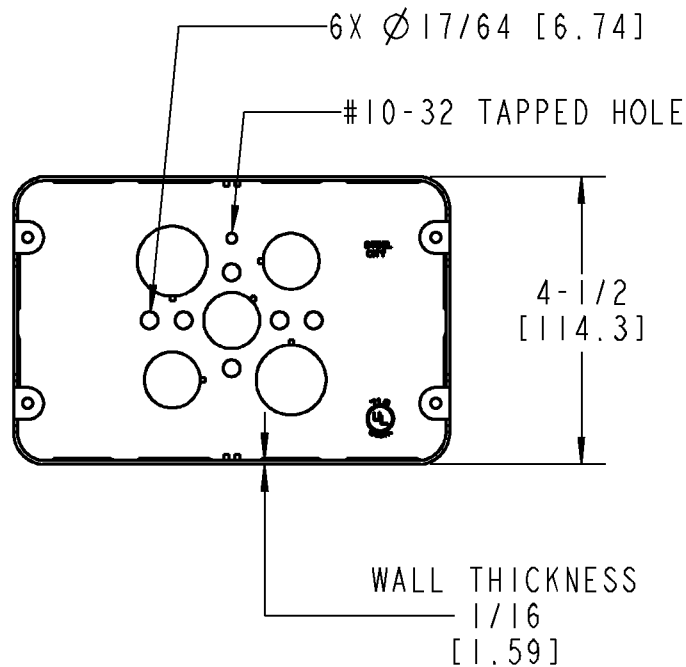




# Thomas & Betts



**CAT. NO. H2BD 1/2 3/4**

71.0 CU. IN.  
[1163.5 CU. CM]

## KNOCKOUTS

CALLOUT	SIZE	SIDES	ENDS	BOTTOM	TOTAL
A	1/2	4	2	3	8
B	3/4	4	2	2	7

## GENERAL NOTES

1. ALL DIMENSIONS ARE FOR REFERENCE ONLY.
2. DIMENSIONS IN BRACKETS [ ] ARE IN METRIC UNITS.

## REVISIONS

0 SEE ERN ( \*\*\*\* )  
FOR APPROVAL SIGNATURES  
& RELEASE DATE.  
PROJECT NO: \*\*\*\*

[www.tnb.com](http://www.tnb.com)

**Thomas & Betts**  
A Member of the ABB Group

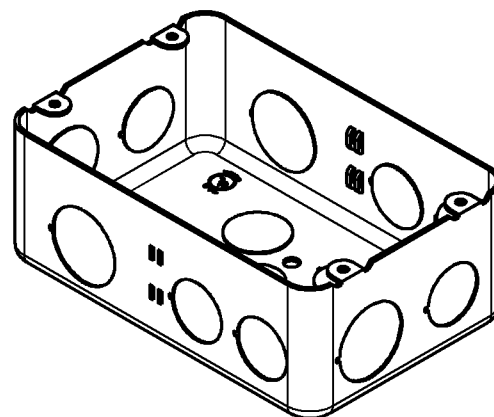
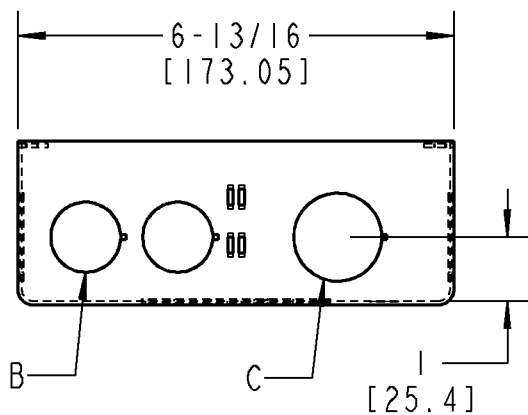
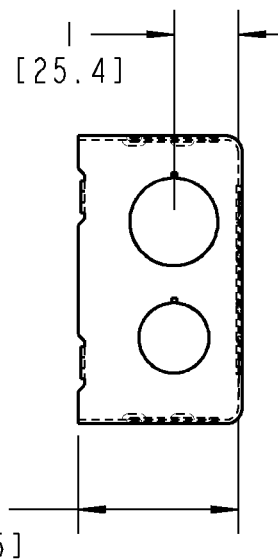
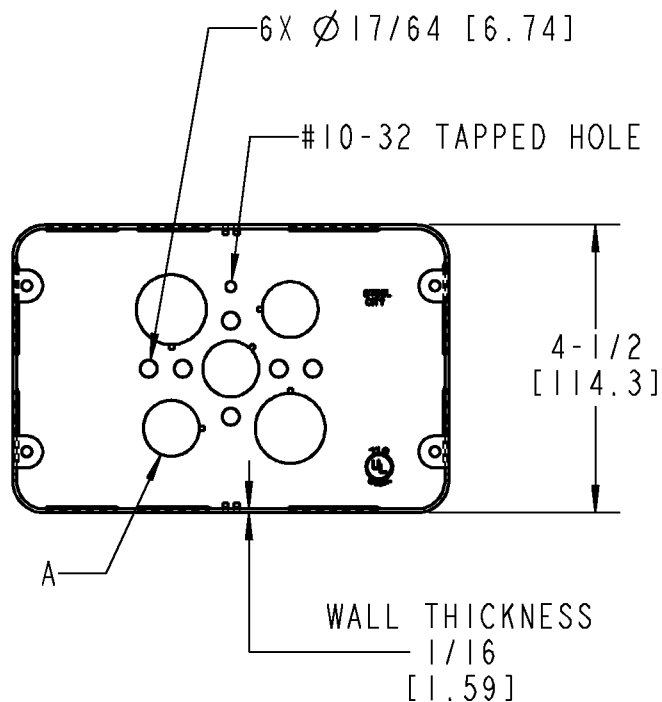
DESCRIPTION: **H2BD 3/4 1, H2BD 1/2 3/4  
GANG BOX**

ORIGINAL PROJECT NO / ( ERN NO )  
**NM400367 / ( 2015599 )**

SHEET NO:  
**1 OF 2**

REV. NO:  
**0**

DRAWING NO:  
**WSD-001282**



**CAT. NO. H2BD 3/4 1**

71.0 CU. IN.  
[1163.5 CU. CM.]

KNOCKOUTS					
CALLOUT	SIZE	SIDES	ENDS	BOTTOM	TOTAL
A	1/2	-	-	3	3
B	3/4	4	2	2	8
C	1	2	2	-	4

<a href="http://www.fnb.com">www.fnb.com</a>			
<b>Thomas &amp; Betts</b> A Member of the ABB Group			
DESCRIPTION: <b>H2BD 3/4 1, H2BD 1/2 3/4 GANG BOX</b>			
	SHEET NO: <b>2 OF 2</b>	REV. NO: <b>0</b>	DRAWING NO: <b>WSD-001282</b>

THIS DRAWING IS INTENDED FOR DESCRIPTIVE PURPOSES ONLY, AND THE RIGHT IS RESERVED TO DEVIATE FROM ANY OF THE DETAILS SHOWN HEREON.  
COPYRIGHT THOMAS & BETTS CORPORATION. ALL RIGHTS RESERVED. PROPRIETARY AND CONFIDENTIAL.