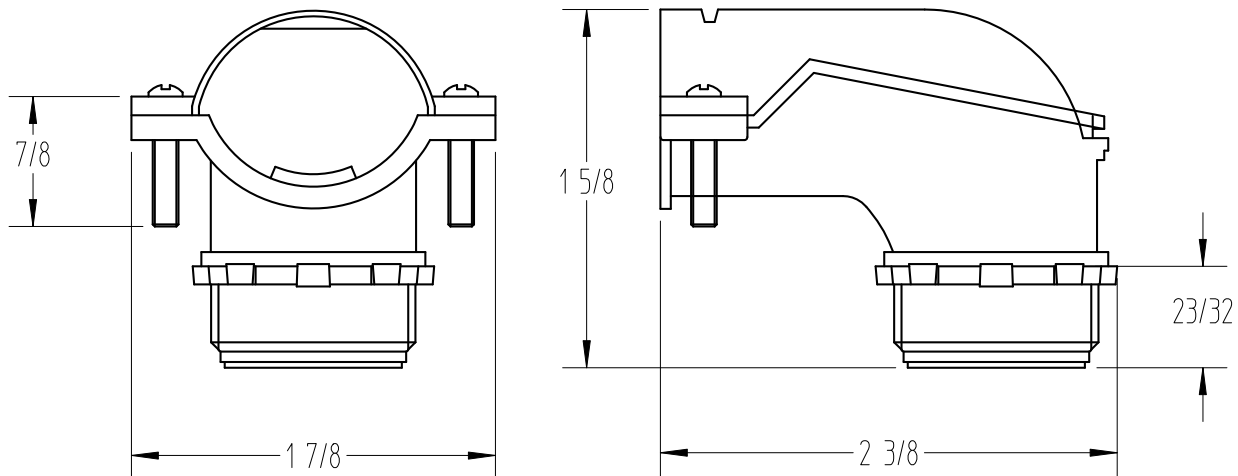




Steel City



NOTES:

1. MATERIAL: DIE CAST ZINC
2. CLAMPING RANGE: 0.827 - 1.055

GENERAL NOTES		<div>Thomas&Betts</div> <div>A Member of the ABB Group</div>			
1. ALL DIMENSIONS ARE FOR REFERENCE ONLY. 2. DIMENSIONS IN BRACKETS [] ARE IN METRIC UNITS.					
REVISIONS		DESCRIPTION: CONNECTOR 3/4" 90° AC/FLEX XC 892			
0	SEE ERN () FOR APPROVAL SIGNATURES & RELEASE DATE. PROJECT NO:	ORIGINAL PROJECT NO / (ERN NO) 010V000880 / (2017602)	SHEET NO: 1 OF 1	REV. NO: 0	DRAWING NO: WSD-001730

THIS DRAWING IS INTENDED FOR DESCRIPTIVE PURPOSES ONLY. AND THE RIGHT IS RESERVED TO DEViate FROM ANY OF THE DETAILS SHOWN HEREON.
COPYRIGHT THOMAS & BETTS CORPORATION. ALL RIGHTS RESERVED. PROPRIETARY AND CONFIDENTIAL.