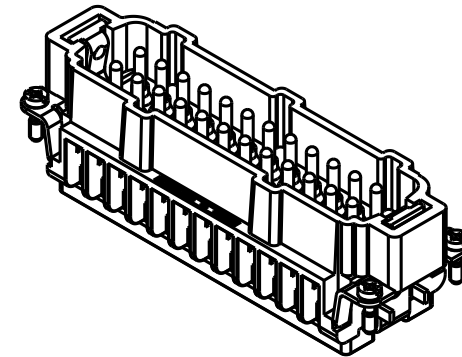
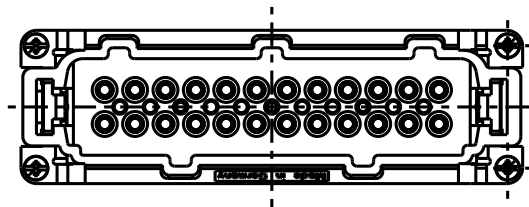
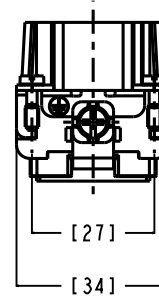
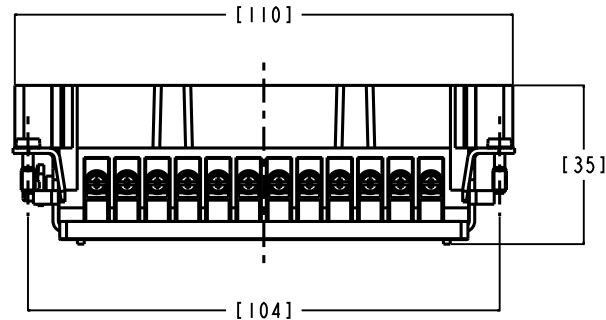


Pos-E-Kon®



T-SERIES 16A AT 600VAC: MALE PIN CONNECTOR WITH 24 CONTACTS + GROUND
 HIGH TEMPERATURE THERMOPLASTIC INSERT RATED FOR 200°C WITH UL94V-0 FLAMMABILITY RATING
 CONTACTS MADE FROM SOLID DRILLED COPPER ALLOY WITH HARD SILVER PLATING - HARD GOLD PLATING IS AVAILABLE
 SCREW TERMINALS FOR USE WITH WIRE RANGE: 0.5-2.5mm² [20-14 AWG]

www.tnb.com

REVISIONS	GENERAL NOTES	DESCRIPTION: MS224T SALES DRAWING			Thomas & Betts A Member of the ABB Group
** SEE ERN (****) FOR APPROVAL SIGNATURES & RELEASE DATE. PROJECT NO: ****	1. ALL DIMENSIONS ARE FOR REFERENCE ONLY. 2. DIMENSIONS IN BRACKETS [] ARE IN METRIC UNITS.	ORIGINAL PROJECT NO / (ERN NO) TM400024 / (2017801)	SHEET NO: 1 OF 1	REV. NO: 0	

DRAWING NO:
WSD-001804

THIS DRAWING IS INTENDED FOR DESCRIPTIVE PURPOSES ONLY. AND THE RIGHT IS RESERVED TO DEViate FROM ANY OF THE DETAILS SHOWN HEREON.
 COPYRIGHT ABB GROUP. ALL RIGHTS RESERVED. PROPRIETARY AND CONFIDENTIAL.