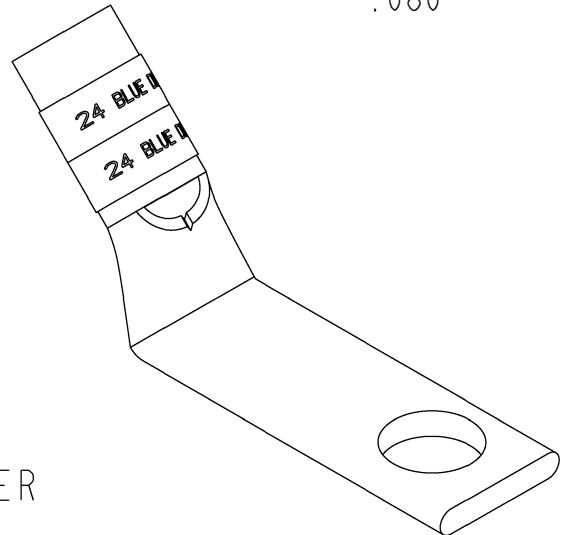
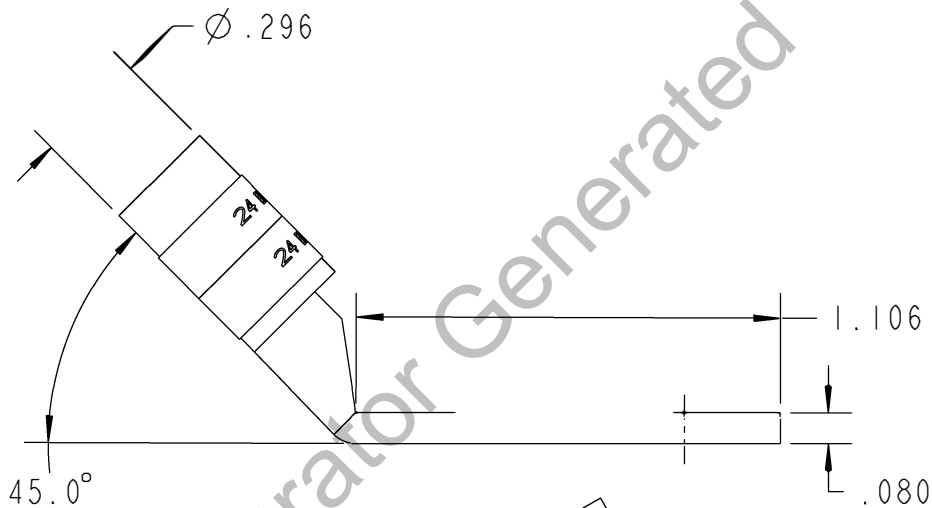
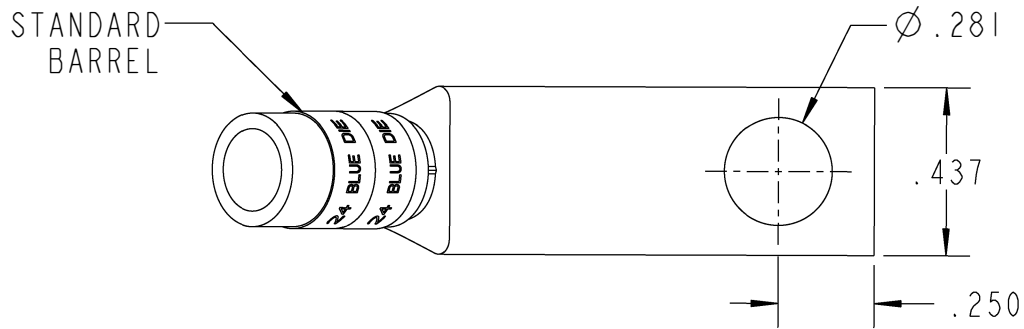


# Color-Keyed™

CATALOG NO. 54105UFB



WIRE SIZE: #6 AWG  
MATERIAL: HIGH CONDUCTIVITY COPPER  
FINISH: TIN PLATED

## GENERAL NOTES

1. ALL DIMENSIONS ARE FOR REFERENCE ONLY.
2. DIMENSIONS IN BRACKETS [ ] ARE IN METRIC UNITS.

## REVISIONS

SEE ERN ( \*\*\*\* )  
FOR APPROVAL SIGNATURES  
& RELEASE DATE.  
PROJECT NO: \*\*\*\*

DESCRIPTION:

1 HOLE LUG

ORIGINAL PROJECT NO / ( ERN NO )  
/ ( )

SHEET NO:  
1 OF 1

REV. NO:  
B

DRAWING NO: WSD-002282  
54105UFB

**Thomas & Betts**

www.tnb.com