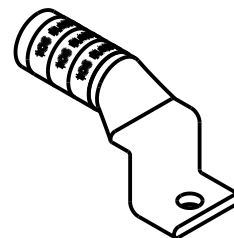
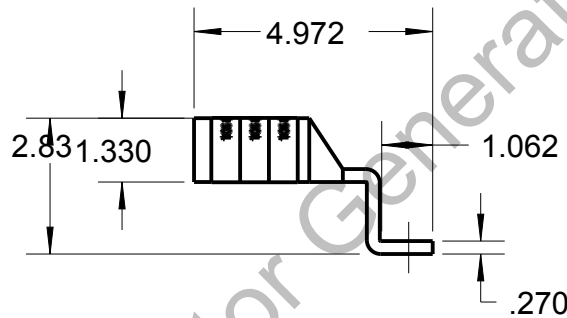
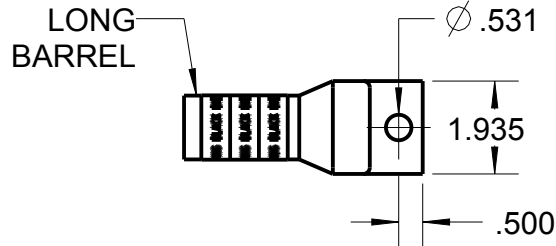



# Blackburn Compression

Featuring the Color-Keyed® System

CATALOG NO. 54922BET



WIRE SIZE: 1600/24, 750 MCM  
MATERIAL: HIGH CONDUCTIVITY COPPER  
FINISH: TIN PLATED

GENERAL NOTES		<div> www.tnb.com</div>			
1. ALL DIMENSIONS ARE FOR REFERENCE ONLY. 2. DIMENSIONS IN BRACKETS [ ] ARE IN METRIC UNITS.					
REVISIONS		DESCRIPTION:  1 HOLE LUG			
** SEE ERN ( **** ) FOR APPROVAL SIGNATURES & RELEASE DATE. PROJECT NO: ****					
		ORIGINAL PROJECT NO / ( ERN NO )  / ( )	SHEET NO:  1 OF 1	REV. NO:  0	DRAWING NO: WSD-002632  54922BET