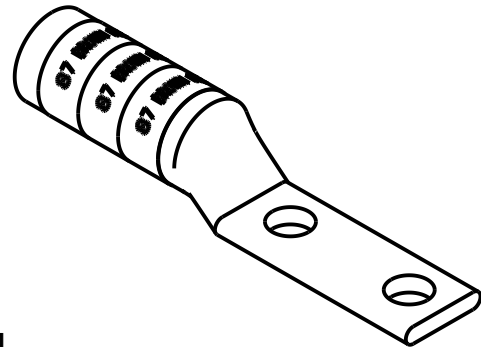
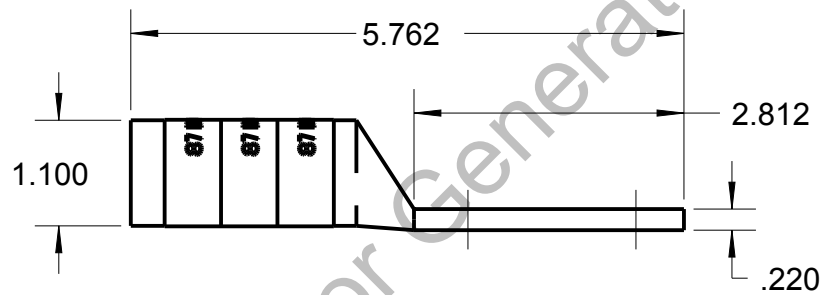
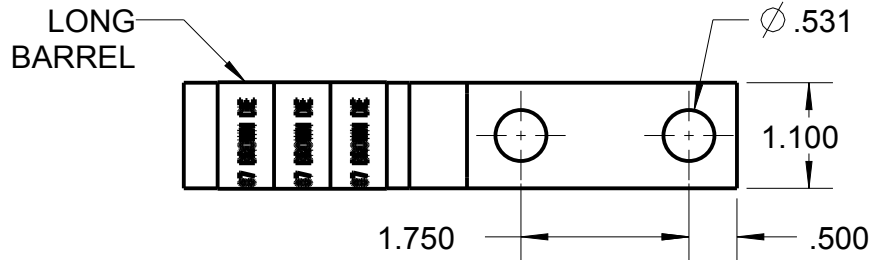


# Blackburn Compression

Featuring the Color-Keyed® System

CATALOG NO. 54876BENT



WIRE SIZE: 350 WELD, 400 WELD, 500 MCM  
 MATERIAL: HIGH CONDUCTIVITY COPPER  
 FINISH: TIN PLATED

GENERAL NOTES		<div><div>Thomas &amp; Betts</div><div>www.tnb.com</div></div>			
1. ALL DIMENSIONS ARE FOR REFERENCE ONLY. 2. DIMENSIONS IN BRACKETS [ ] ARE IN METRIC UNITS.					
REVISIONS		DESCRIPTION: <div>2 HOLE LUG</div>			
**	SEE ERN ( **** ) FOR APPROVAL SIGNATURES & RELEASE DATE. PROJECT NO: ****	ORIGINAL PROJECT NO / ( ERN NO ) <div>/ ( )</div>	SHEET NO: <div>1 OF 1</div>	REV. NO: <div>0</div>	DRAWING NO: WSD-002691 <div>54876BENT</div>