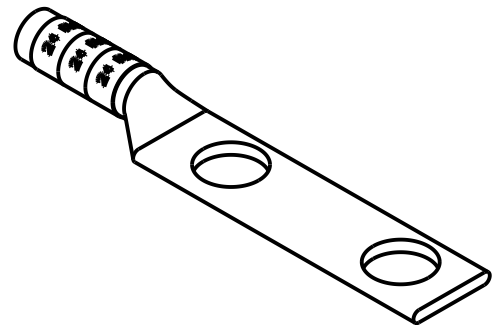
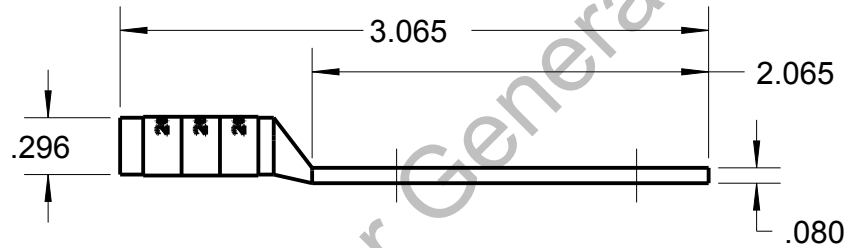
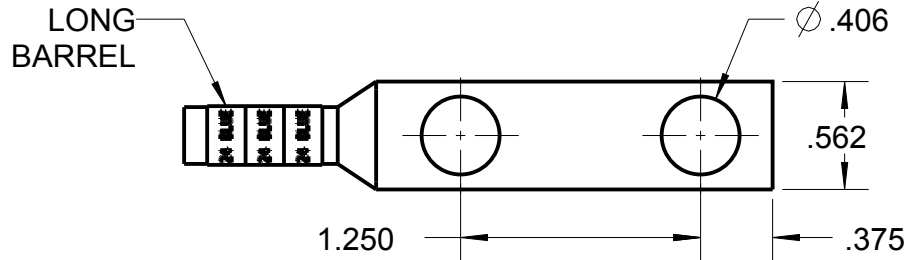


Blackburn Compression

Featuring the Color-Keyed® System

CATALOG NO. 54852BE0620



WIRE SIZE: # 6 AWG
MATERIAL: HIGH CONDUCTIVITY COPPER
FINISH: TIN PLATED

| | | | | | |
|---|--|--|--------------------------------|--------------------------|--|
| GENERAL NOTES | | <div><div>Thomas & Betts</div><div>www.tnb.com</div></div> | | | |
| 1. ALL DIMENSIONS ARE FOR REFERENCE ONLY. 2. DIMENSIONS IN BRACKETS [] ARE IN METRIC UNITS. | | | | | |
| REVISIONS | | DESCRIPTION: <div>2 HOLE LUG</div> | | | |
| ** | SEE ERN (****) FOR APPROVAL SIGNATURES & RELEASE DATE. PROJECT NO: **** | ORIGINAL PROJECT NO / (ERN NO) <div>/ ()</div> | SHEET NO: <div>1 OF 1</div> | REV. NO: <div>0</div> | DRAWING NO: WSD-003102 <div>54852BE0620</div> |