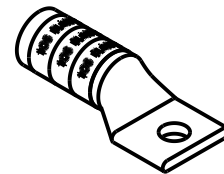
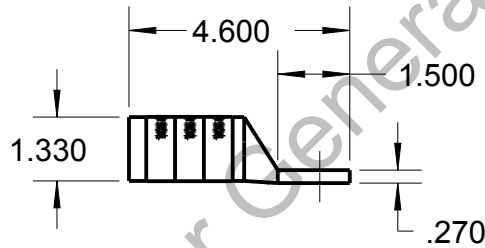
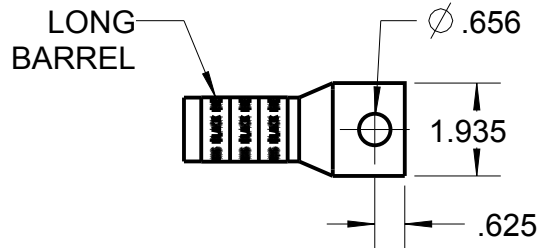



Blackburn Compression

Featuring the Color-Keyed® System

CATALOG NO. 58984BE



WIRE SIZE: 1600/24, 750 MCM
 MATERIAL: HIGH CONDUCTIVITY COPPER
 FINISH: TIN PLATED

| | | | | | |
|---|--|--|-------------------------|-------------------|-------------------------------|
| GENERAL NOTES | | <div> www.tnb.com</div> | | | |
| 1. ALL DIMENSIONS ARE FOR REFERENCE ONLY. 2. DIMENSIONS IN BRACKETS [] ARE IN METRIC UNITS. | | | | | |
| REVISIONS | | DESCRIPTION: 1 HOLE LUG | | | |
| ** | SEE ERN (****) FOR APPROVAL SIGNATURES & RELEASE DATE. PROJECT NO: **** | ORIGINAL PROJECT NO / (ERN NO) / () | SHEET NO: 1 OF 1 | REV. NO: A | DRAWING NO: WSD-003302 |