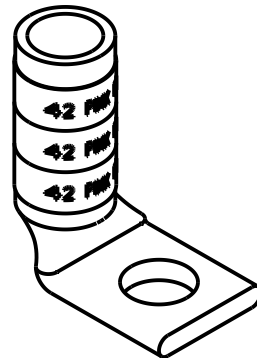
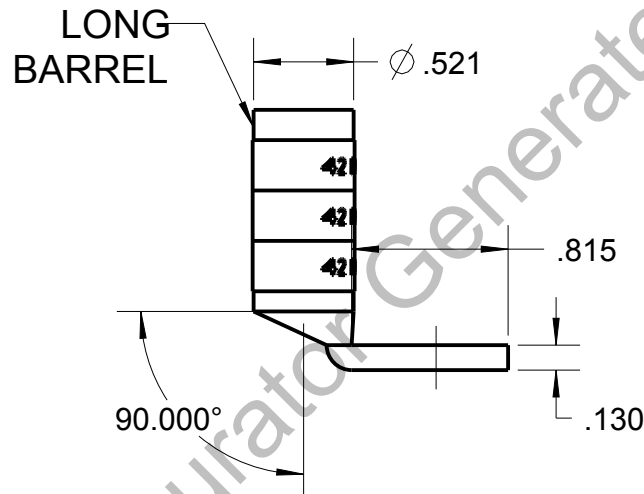
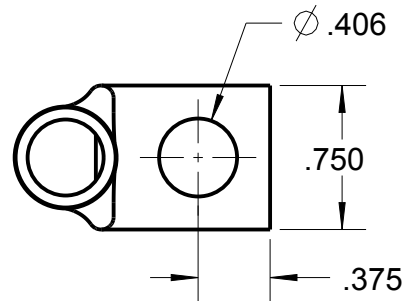


Blackburn Compression

Featuring the Color-Keyed® System

CATALOG NO. 54909BEUB



WIRE SIZE: 1/0
MATERIAL: HIGH CONDUCTIVITY COPPER
FINISH: TIN PLATED

GENERAL NOTES		<div><div><div>Thomas & Betts</div><div>www.tnb.com</div></div></div>			
1. ALL DIMENSIONS ARE FOR REFERENCE ONLY. 2. DIMENSIONS IN BRACKETS [] ARE IN METRIC UNITS.					
REVISIONS		DESCRIPTION: 1 HOLE LUG			
**	SEE ERN (****) FOR APPROVAL SIGNATURES & RELEASE DATE. PROJECT NO: ****	ORIGINAL PROJECT NO / (ERN NO) / ()	SHEET NO: 1 OF 1	REV. NO: A	DRAWING NO: WSD-003356