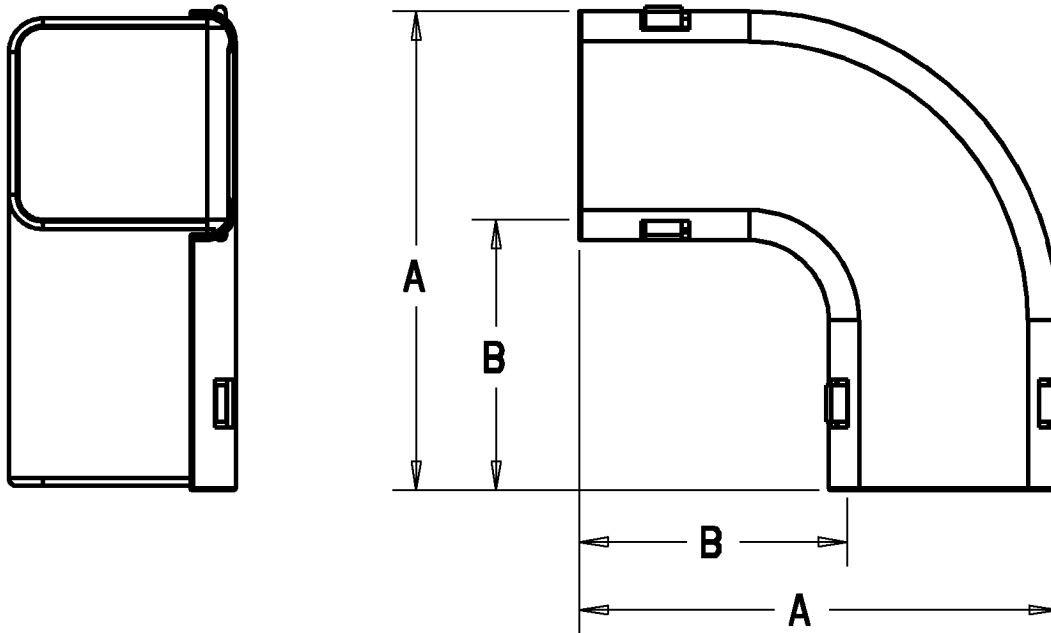


Carlton®




CEP P/N	EGALINE PVC LAY-IN WIREWAY FITTINGS		
	PRODUCT DESCRIPTION	A IN (MM)	B IN (MM)
EGLFJ	2 X 2" FLAT ELBOW	4.78 (121.3)	2.78 (70.5)
EGLFL	3 X 3" FLAT ELBOW	6.89 (175.2)	3.89 (99.0)

P/N'S EGLFN AND EGLFR ARE ON DRAWING WSD-AC01942

NOTE:

1. PRODUCT IS UL LISTED. FILE E163227
2. MATERIAL: UL 94V-0 PVC
3. COLOR: GRAY
4. FLAT ELBOW IS MOLDED IN UK.

GENERAL NOTES		 <small>www.tnb.com</small>			
1. ALL DIMENSIONS ARE FOR REFERENCE ONLY. 2. DIMENSIONS IN BRACKETS [] ARE IN METRIC UNITS.					
REVISIONS		DESCRIPTION: 90 DEGREE BEND FLAT ELBOW WIREWAY			
*** SEE ERN (****) FOR APPROVAL SIGNATURES & RELEASE DATE. PROJECT NO: ****		ORIGINAL PROJECT NO / (ERN NO) / ()	SHEET NO: 1 OF 1	REV. NO: A	DRAWING NO: WSD-AC03344