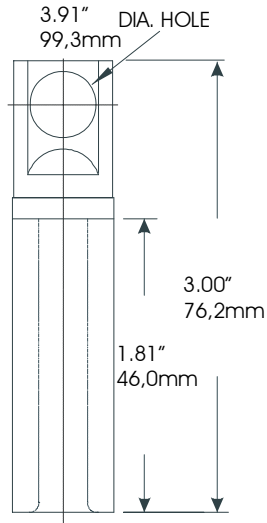


**PRODUCT SPECIFICATION SHEET**
**I T C**
**200A Bolted Elbow Crimp Connector**
**02800XXX**


**02800XXX** bi-metallic connectors consist of a copper top section and a aluminum crimp barrel. Units are designed for use with **167LRT** bolted elbows on aluminum or copper conductors.

**Ordering Instruction:**

Using the table below, select a compression lug part number based on conductor size.

AWG or kcmil		mm <sup>2</sup> Compact Only	Lug Number
Stranded/ Compr.	Solid/ Compact		
--	4	16	02800190
4	3	22	02800200
3	2	30	02800210
2	1	35	02800220
1	1/0	50	02800230
1/0	2/0	70	02800240
2/0	3/0	--	02800250
3/0	4/0	95	02800260
4/0	250	125	02800270

The 0270XXX includes the following:

- 1 – connector                      02800XXX
- 1 – Crimp Chart                  CC-0020