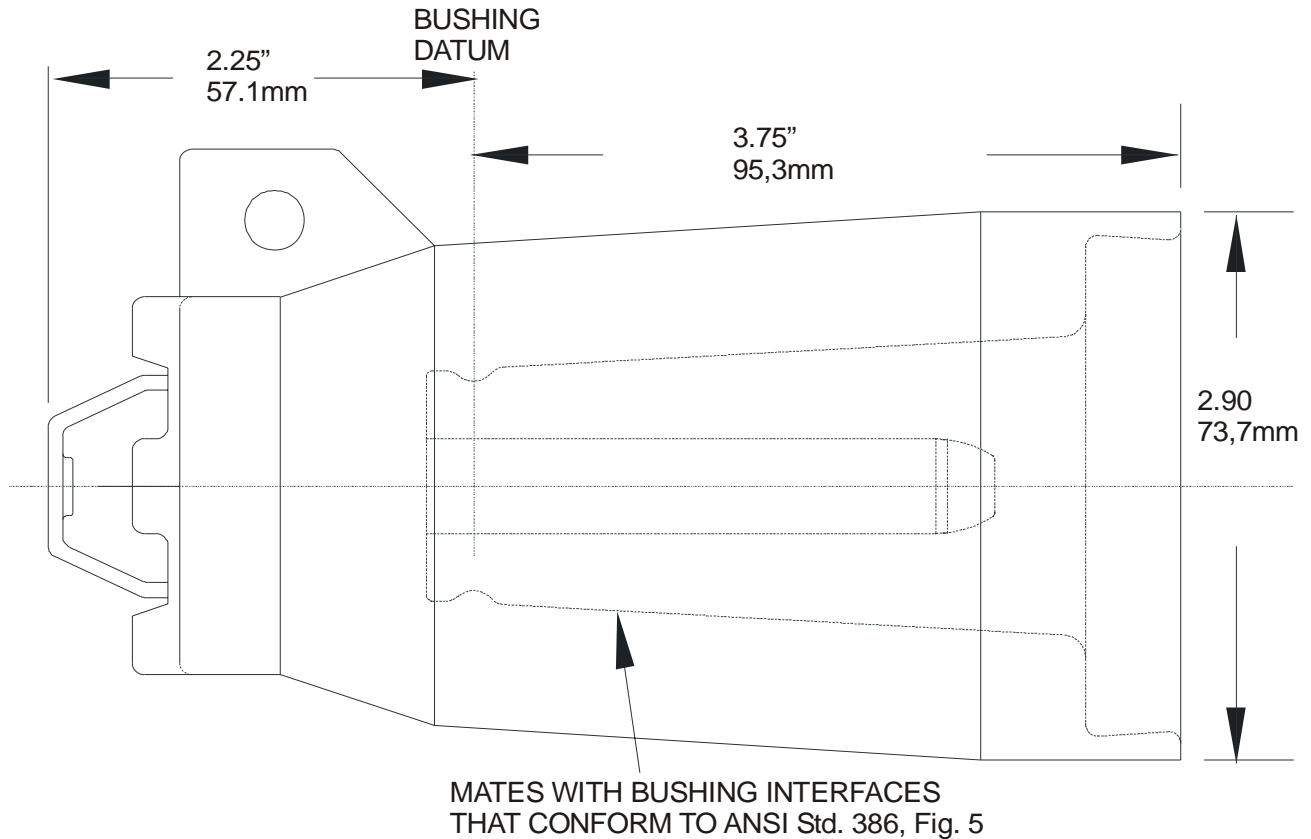


PRODUCT SPECIFICATION SHEET	I T C
15kV 200A Loadbreak Insulated Cap	160DR



Application:

ELASTIMOLD 160DR insulated caps (without insulated cuff) are fully shielded, fully submersible, hot stick operable, separable insulated connector designed for energized operation. They are suitable for use on 15kV class loadbreak systems. The 160DR is used to "dead-end" the following ELASTIMOLD mating products:

- * 1601A4 bushing insert
- * 1602A3R feed-thru insert
- * 164FT feed-thru
- * 164 series junctions

Ratings

per ANSI/IEEE Standard 386
 15kV Voltage Class
 8.3kV Max Phase-to-Ground - Operating Voltage
 14.4kV Max Phase-to-Phase
 95kV BIL - Impulse Withstand (1.2 x 50 microsecond wave)
 34kV AC - One minute Withstand
 53kV DC - 15 Minutes Withstand
 11kV AC - Corona Extinction @ 3p.C.sensitivity
 200 Amp - Continuous and Loadbreak
 10kA Sym - 10 Cycles Momentary & Fault Close

Ordering Instructions:

To order, specify number **160DR** bushing insert.

The 160DR bushing insert includes the following:

- | | |
|------------------------------|---------|
| 1 - Insulated cap | 160DR |
| 1 - Lubricant | 82-08 |
| 1 - Installation instruction | IS-0893 |