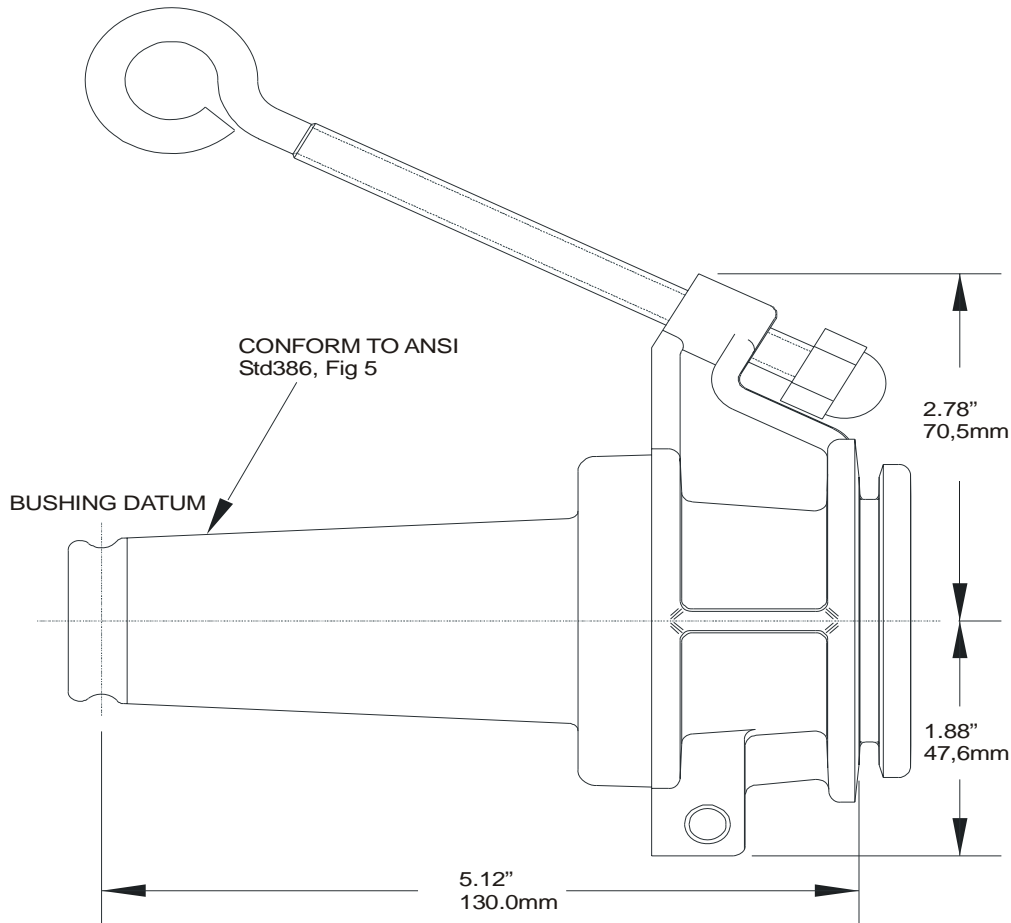


<b>PRODUCT SPECIFICATION SHEET</b>		<b>I T C</b>
<b>15kV 200A Insulated Parking Bushing</b>		<b>161SOP</b>



The Elastimold 161SOP Insulated Parking Bushing is equipped with a 15kV class, 200 Amp loadbreak interface, a cast aluminum bracket for insertion into a standard parking stand and hot stick operable mounting hardware. The 161SOP are inserted into the parking stand with an insulated hot stick and secured in place. Mating Elastimold 15kV class Loadbreak Elbows can then be removed from the equipment and placed on the 161SOP to provide a fully shielded and fully submersible connection. Provisions for grounding the 161SOP mounting bracket are included.

**Ratings:**

- per ANSI/IEEE Standard 386
- 15kV Voltage Class
- 8.3kV Max Phase-to-Ground - Operating Voltage
- 14.4kV Max Phase-to-Phase
- 95kV BIL - Impulse Withstand (1.2 x 50 microsecond wave)
- 34kV AC - One minute Withstand
- 53kV DC - 15 Minutes Withstand
- 11kV AC - Corona Extinction @ 3p.C.sensitivity
- 200Amp - Continuous and Loadbreak
- 10kA Sym - 10 Cycles Momentary & Fault Close

**Ordering Instructions:**

To order, specify number **161SOP** Insulated Parking Bushing.

**The 161SOP includes the following:**

- 1 – Insulated parking bushing           161SOP
- 1 – Protective shipping cap           1601-APC-1
- 2 – Lubricant                               82-08
- 1 - Installation instruction           IS-0777

**Features:**

- 15kV, 200 Amp loadbreak rated.
- Molded EPDM interface.
- Cast aluminum bracket with slotted end, which inserts into parking stand.
- 5/16"-18 Stainless steel eyebolt with brass cap nut allows hot stick installation and firmly secures the 161SOP into the mating parking stand.
- Set screw ground connection with 1/4" diameter thru hole.