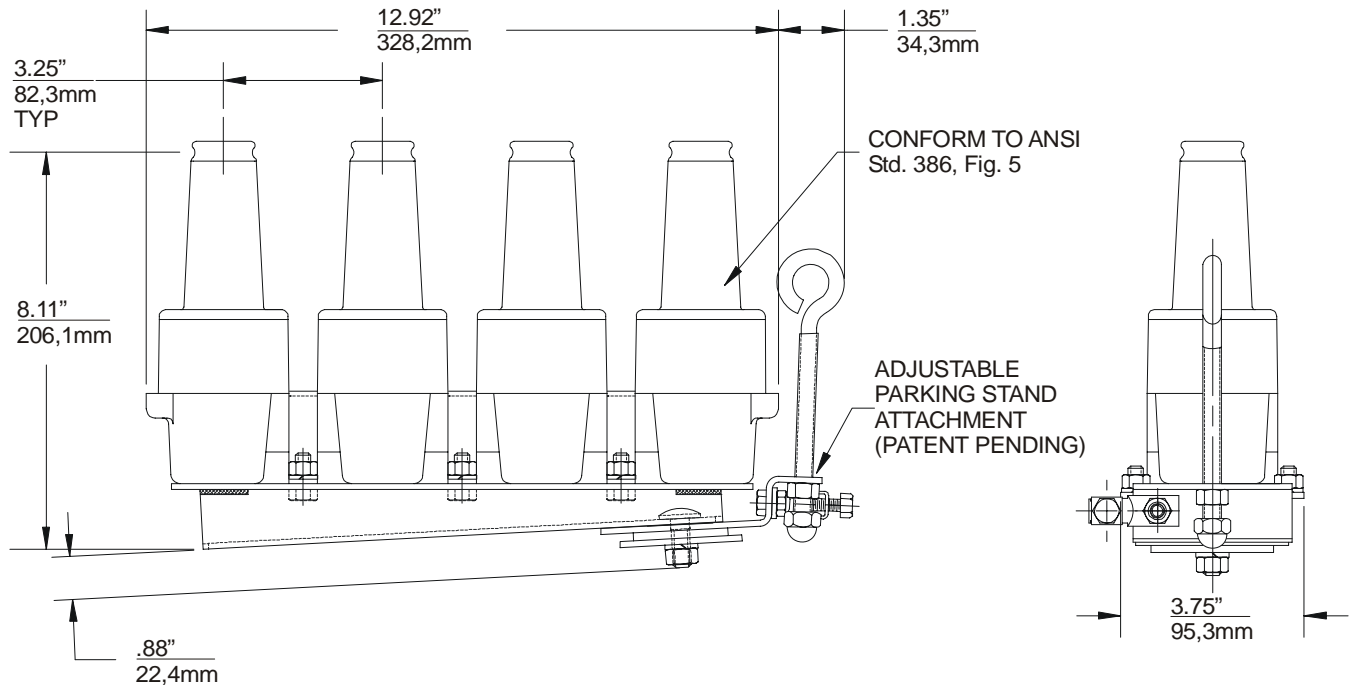


PRODUCT SPECIFICATION SHEET
I T C
15kV 200A Loadbreak Feed-Thru 4
164FT4-AB


Ratings

per ANSI/IEEE Standard 386

15kV Voltage Class

8.3kV Max Phase-to-Ground - Operating Voltage

14.4kV Max Phase-to-Phase

95kV BIL - Impulse Withstand (1.2 x 50 microsecond wave)

34kV AC - One Minute Withstand

53kV DC - 15 Minutes Withstand

11kV AC - Corona Extinction @ 3pC Sensitivity

200 Amp - Continuous and Loadbreak

10kA Sym - 10 Cycles Momentary & Fault Close

Ordering Instructions:

 To order, specify number **164FT4-AB** feed-thru

The 164FT4-AB feed-thru includes the following:

1 – Feed-thru body	164FT4-AB
4 – Protective shipping caps	1601-APC-1
4 – Lubricants	82-08
1 – Installation instruction	IS-1102

The 164FT4-AB feed-thru is a fully shielded, fully submersible, separable insulated connector designed for energized operation. It is suitable for use on 15kV class loadbreak systems. When used in conjunction with 15kV class elbow connectors, the 164FT4-AB provides the circuit with the loadbreak junction point. Testing and grounding of the circuit is accomplished when the 164FT4-AB is used in conjunction with the 370TR and 160GLR. When used in conjunction with a 160DR, the 164FT4-AB can be used to isolate and “dead-end” the circuit. The 164FT4-AB is designed to reduce the number of accessories and operating steps required, therefore simplifying a three-phase padmounted transformer change-out. The 164FT4-AB adjustable bracket allows the parking stand attachment to be adjusted left and right, and the feed-thru tilt to facilitate the best operating placement. The 164FT4-AB is designed to mate with the following Elastimold products:

- 165LR/166LR elbow connector
- 370TR test rod
- 160GLR grounding elbow
- 160DR/DRG & 167DR/DRG insulated cap