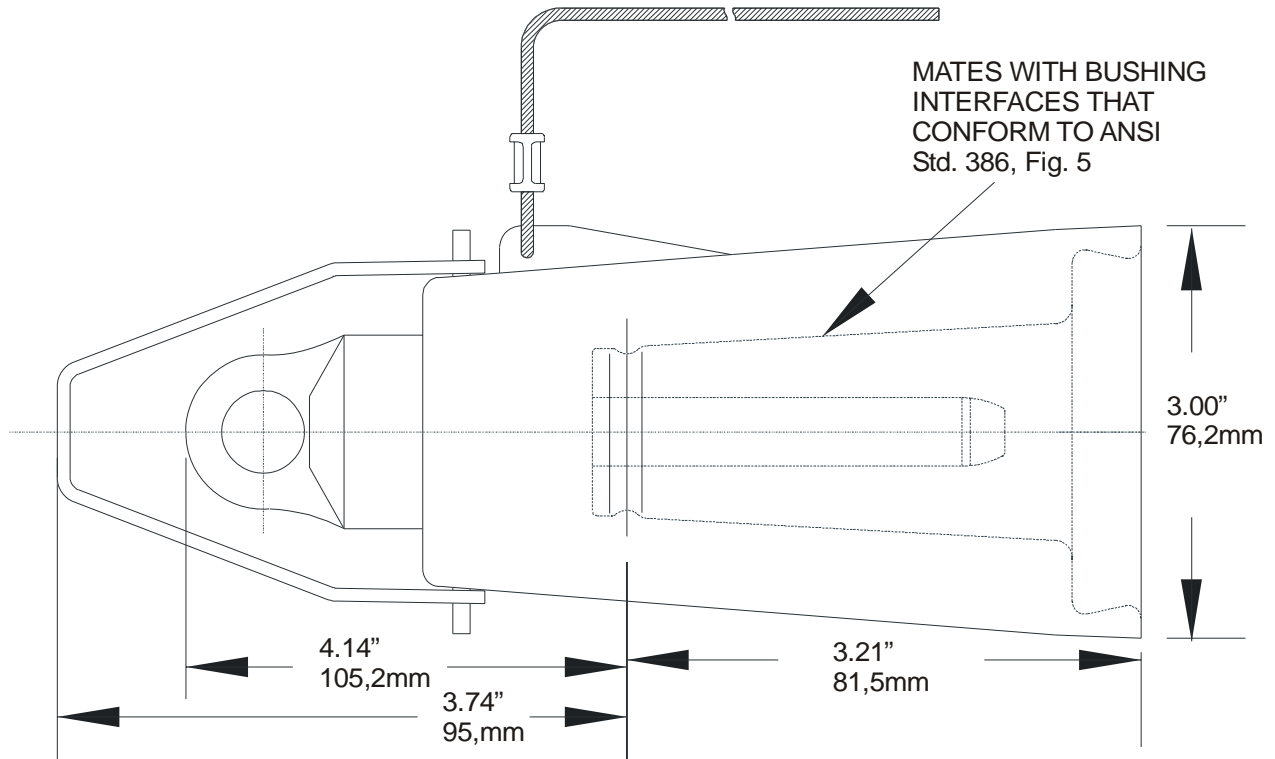


| | | |
|--|--|---------------|
| PRODUCT SPECIFICATION SHEET | | I T C |
| 15kV 200A Loadbreak Insulated Cap | | 168DRG |

w/ Ground Lead, Insulated Cuff, & Test Point



ELASTIMOLD 168DRG insulated caps (with insulated cuff & test point) are fully shielded, fully submersible, hot stick operable, separable insulated connector designed for energized operation. They are suitable for use on 15kV class loadbreak systems. The 168DRG has an integral ground lead as part of the assembly. The 168DRG is used to “dead-end” the following ELASTIMOLD mating products:

- * 1601A4 bushing insert
- * 1602A3R feed-thru insert
- * 164FT feed-thru
- * 164 series junctions

Ratings

- per ANSI/IEEE Standard 386
- 15kV Voltage Class
- 8.3kV Max Phase-to-Ground - Operating Voltage
- 14.4kV Max Phase-to-Phase
- 95kV BIL - Impulse Withstand (1.2 x 50 microsecond wave)
- 34kV AC - One minute Withstand
- 53kV DC - 15 Minutes Withstand
- 11kV AC - Corona Extinction @ 3p.C.sensitivity
- 200 Amp - Continuous and Loadbreak
- 10kA Sym - 10 Cycles Momentary & Fault Close

Ordering Instructions:

To order, specify number **168DRG** bushing insert.

The 168DRG bushing insert includes the following:

- 1 – Insulated cap 168DRG
- 1 – Gnd cable #14 AWG, 38” 161-14-2
- 1 – Lubricant 82-08
- 1 – Installation instruction IS-0271