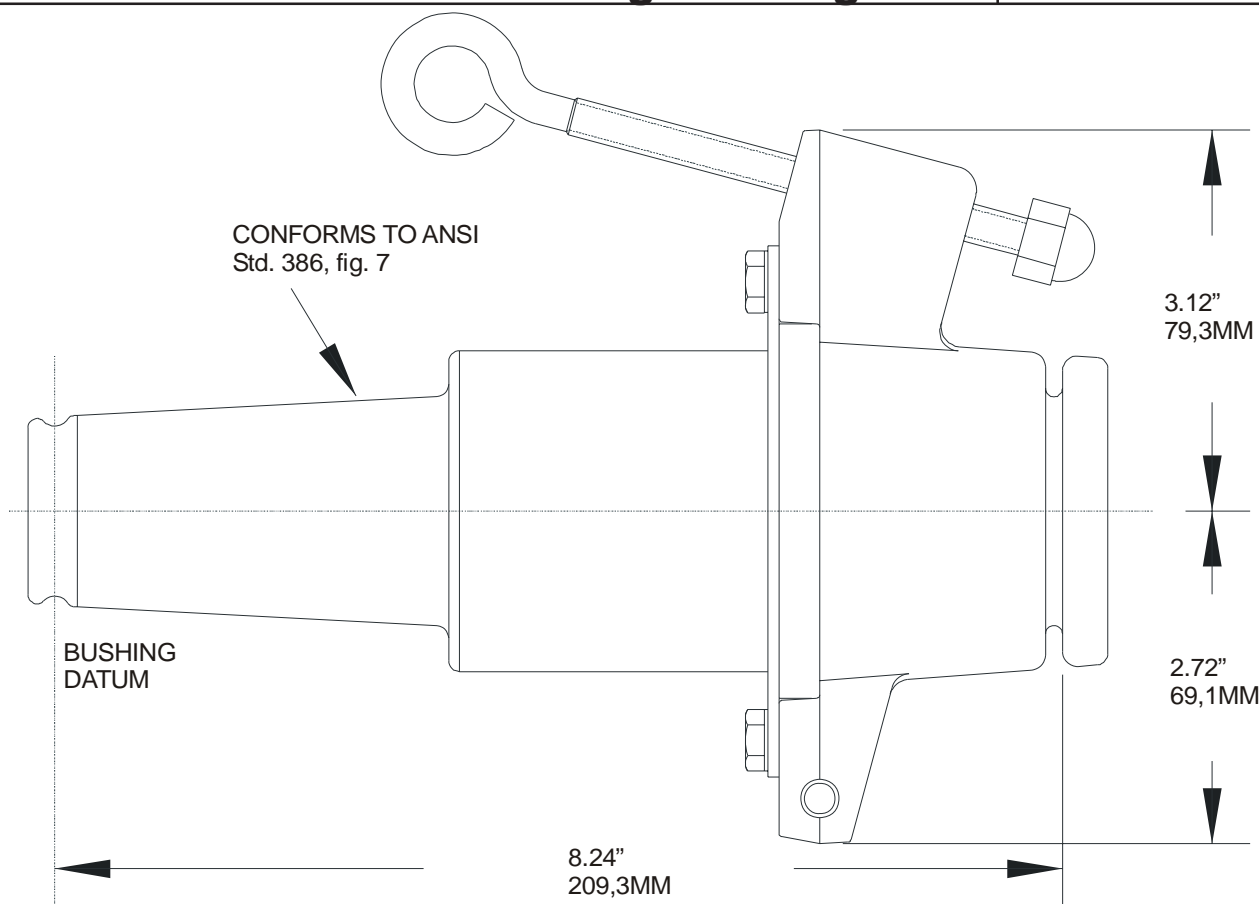


<b>PRODUCT SPECIFICATION SHEET</b>		<b>I T C</b>
<b>35kV 200A Insulated Parking Bushing</b>		<b>372SOP</b>



The Elastimold 372SOP Insulated Parking Bushing is equipped with a 35kV class, 200 Amp loadbreak interface, a cast aluminum bracket for insertion into a standard parking stand and hot stick operable mounting hardware. The 372SOP are inserted into the parking stand with an insulated hot stick and secured in place. Mating Elastimold 35kV class Loadbreak Elbows can then be removed from the equipment and placed on the 372SOP to provide a fully shielded and fully submersible connection. Provisions for grounding the 372SOP mounting bracket are included.

**Features:**

- 35kV, 200 Amp loadbreak rated.
- Molded EPDM interface.
- Cast aluminum bracket with slotted end, which inserts into parking stand.
- 5/16"-18 Stainless steel eyebolt with brass cap nut allows hot stick installation and firmly secures the 372SOP into the mating parking stand.
- Set screw ground connection with 1/4" diameter thru hole.

**Ratings**

per ANSI/IEEE Standard 386  
 35kV Voltage Class 1 Ø and 3 Ø  
 21.1kV Max Phase-to-Ground - Operating Voltage  
 36.6kV Max Phase-to-Phase  
 150kV BIL - Impulse Withstand (1.2 x 50 microsecond wave)  
 50kV AC - One minute Withstand  
 103kV DC - 15 Minutes Withstand  
 26kV AC - Corona Extinction @ 3p.C.sensitivity  
 200Amp - Continuous and Loadbreak  
 10kA Sym - 10 Cycles Momentary & Fault Close

**Ordering Instructions:**

To order, specify number **372SOP** Insulated Parking Bushing

**The 372SOP includes the following:**

- |                               |         |
|-------------------------------|---------|
| 1 – Insulated parking bushing | 372SOP  |
| 1 – Protective shipping cap   | 2701-41 |
| 2 – Lubricant                 | 82-08   |
| 1 – Installation instruction  | IS-0779 |