

Above Grade / Pedestal

Strength and Conductivity Bars are constructed of 6061-T6 aluminum alloy

Qualifications

- ANSI C119.4, Class A
- Dual Rated for Copper and Aluminum

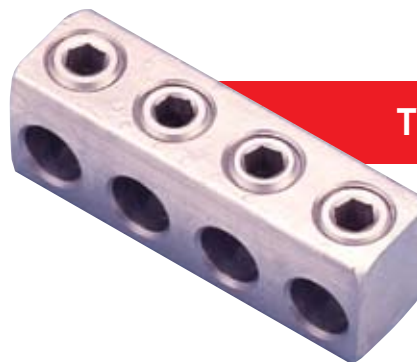
Standard aluminum set screws with 5/16" socket hex:

- Spread compressive forces over conductor strands
- Reduce strand damage
- Increase inter-strand movement
- Result in lower contact resistance
- Provide high set screw torque retention

Insulating Cover 105°C rated red cover available for insulating connector after installing conductors

Contax® Oxide Inhibitor Included as standard in all conductor ports

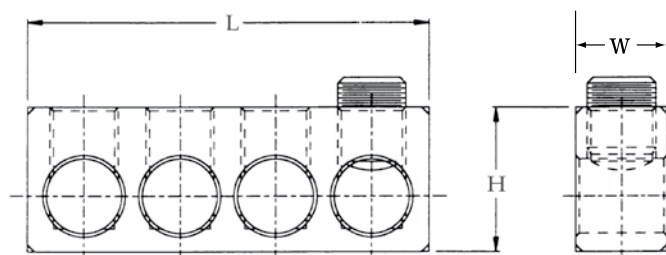
Easy Identification Each unit is individually wrapped and labeled



TYPE PSB



**TYPE PSB
INSULATING COVER**



350 SERIES – Bare PSB Bars *Dual Rated (AL-CU)*

Catalog No.	No. of Ports	Cable Range	Length in (mm)	Slip-On Plasticol Cover <i>(ordered separately)</i>
PSB2359	2	350-12	2.0 (52)	PPC43
PSB3359	3		3.1 (78)	
PSB4359	4		4.1 (105)	
PSB5359	5		5.2 (131)	PPC63
PSB6359	6		6.2 (158)	
PSB7359	7		7.3 (184)	PPC83
PSB8359	8		8.3 (211)	

500 SERIES – Bare PSB Bars *Dual Rated (AL-CU)*

Catalog No.	No. of Ports	Cable Range	Length in (mm)	Slip-On Plasticol Cover <i>(ordered separately)</i>
PSB2559	2	500-10	2.3 (58)	PPC45
PSB3559	3		3.5 (89)	
PSB4559	4		4.7 (119)	
PSB5559	5		5.9 (149)	PPC65
PSB6559	6		7.1 (179)	
PSB7559	7		8.3 (210)	PPC85
PSB8559	8		9.4 (240)	

750 SERIES – Bare PSB Bars *Dual Rated (AL-CU) SINGLE SET SCREW*

Catalog No.	No. of Ports	Cable Range	Length in (mm)	Slip-On Plasticol Cover <i>(ordered separately)</i>
PSB3759	3	750-2	4.6 (117)	PPC410
PSB4759	4		6.2 (159)	
PSB6759	6		9.5 (241)	PPC610
PSB8759	8		12.7 (324)	PPC810

750 SERIES – Bare PSB Bars *Dual Rated (AL-CU) DOUBLE SET SCREW*

Catalog No.	No. of Ports	Cable Range	Length in (mm)	Slip-On Plasticol Cover <i>(ordered separately)</i>
PSB4759HD	4	750-2	6.2 (159)	PPC410
PSB6759HD	6		9.5 (241)	PPC610
PSB8759HD	8		12.7 (324)	PPC810

1000 SERIES – Bare PSB Bars *Dual Rated (AL-CU) DOUBLE SET SCREW*

Catalog No.	No. of Ports	Cable Range	Length in (mm)	Slip-On Plasticol Cover <i>(ordered separately)</i>
PSB4159HD	4	1000-350	6.5 (165)	PPC410
PSB6159HD	6		9.8 (249)	PPC610
PSB8159HD	8		13.1 (333)	PPC810

- Other color covers are available (clear, black)
Example: PPC65-C for clear cover; PPC65-B for black
- NOTE: For street light option add 'S'. Example: PSB6359S

Above Grade / Pedestal

Pre Insulated Bar Port separated clear plastic covers provide insulation while allowing the installation. Minimizes contact with energized parts

Strength and Conductivity Bars are constructed of 6061-T6 aluminum alloy

Qualifications

- ANSI C119.4, Class A
- RUS Listed

Standard aluminum set screws with 5/16" socket hex:

- Spread compressive forces over conductor strands
- Reduce strand damage
- Increase inter-strand movement
- Result in lower contact resistance
- Provide high set screw torque retention

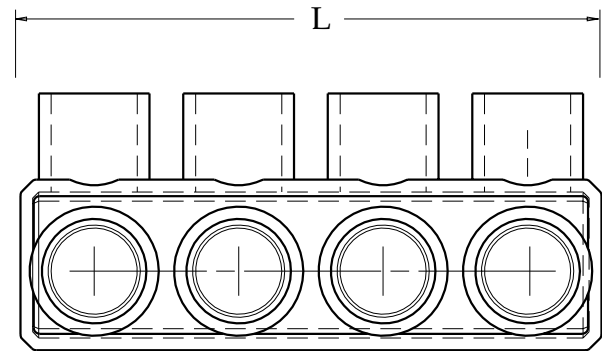
Contax® Oxide Inhibitor Included as standard in all conductor ports

Easy Identification Each unit is individually wrapped and labeled



TYPE PSB-C

Pedestal Set-Screw Connectors



350 SERIES – Insulated PSB Bars Dual Rated (AL-CU)

Catalog No.	No. of Ports	Cable Range	Length	
			in.	(mm)
PSB4359C	4	350-12	4.8	122
PSB6359C	6		7.1	180
PSB8359C	8		9.4	239

500 SERIES – Insulated PSB Bars Dual Rated (AL-CU)

Catalog No.	No. of Ports	Cable Range	Length	
			in.	(mm)
PSB4559C	4	500-10	6.0	152
PSB6559C	6		9.0	229
PSB8559C	8		12.0	305

SECONDARY UNDERGROUND

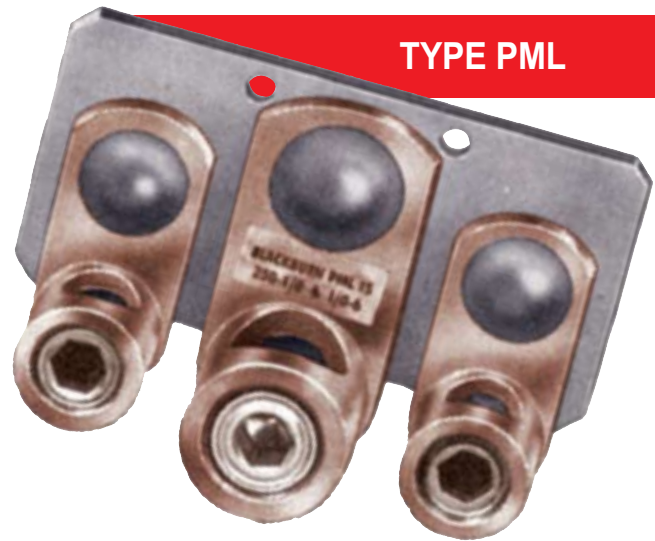
PML Bolted Copper Pedestal Connectors

Designed for Use in Compact, Above Grade Pedestals

Use with #6 str – 250 Kcmil copper conductor

Furnished with Type “L” Copper Lugs Riveted to Tin-Plated Copper Bus

Pedestal Set-Screw Connectors



TYPE PML

TYPE PML COPPER PEDESTAL CONNECTORS

Catalog No.	No. of Ports	Cable Range
PML17	6	#6 str – 250 Kcmil
CAP7	EPDM Insulating Cover	

- Lugs utilize bronze allen-head set screws with radial tip.
- External slip-on cover available (cap 7).
- Add suffix 'C' to PML17 to receive connector with cover.
- Cap 7 is EPDM cover rated >700 Volts/mil.



TYPE CAP7